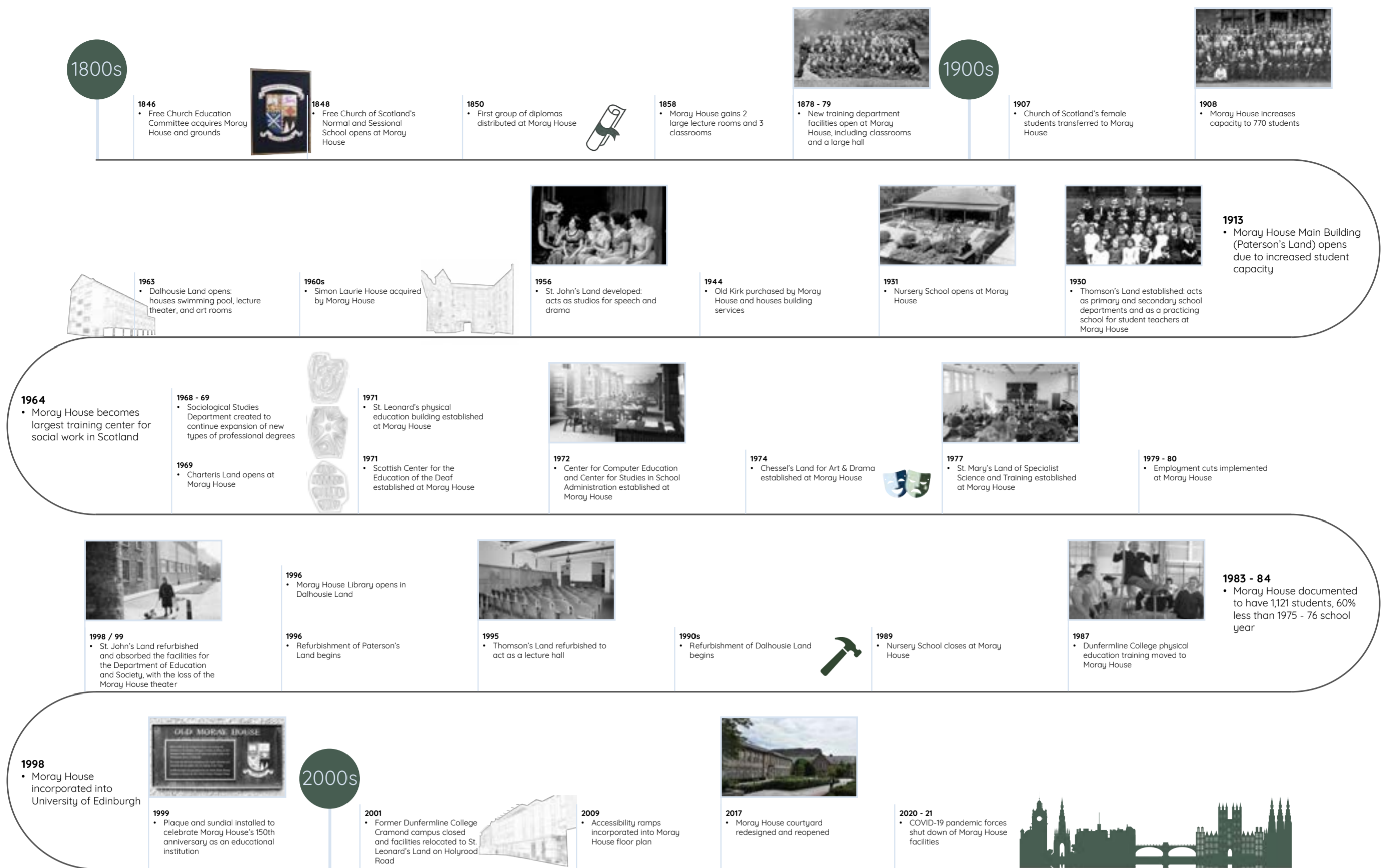
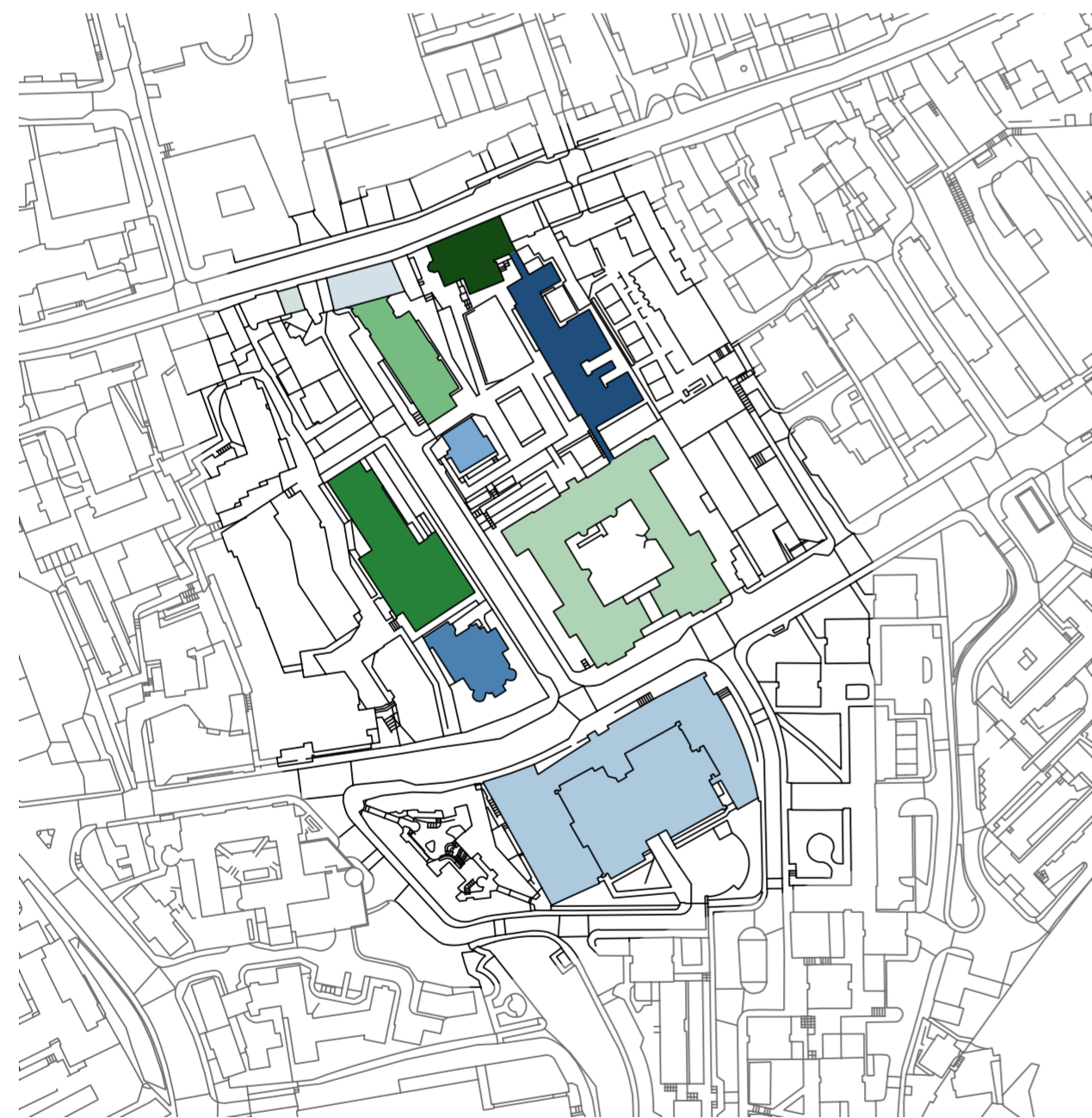


Getting Schooled: An Educational Review of Moray House



Timeline of Moray House Education System



QGIS Map of Educational Facilities Apart of Moray House

As a city, Edinburgh is a physical and metaphorical palimpsest comprising hundreds of historically significant structures and stories. Even through protections and careful maintenance, Edinburgh's historic buildings face their own unique challenges. From structural issues to fashionable design changes, Edinburgh's streetscape has adapted and changed to suit the needs of its surrounding community.

Moray House, located in Edinburgh's Canongate, is a shining example of how historic buildings can be conserved in-situ but also adapted to serve new purposes. Moray House's significance through an educational lens uniquely positions it as both a historic house, but also a teaching campus for the University of Edinburgh's Moray School of Education. Special focus is often paid to the survival of the Canongate facade, historic interiors, and redevelopment of the gardens.



Trainee teachers at Moray House College of Education, Edinburgh, c. 1885



Primary students in front of Moray House, c. 1900s



Conference at Moray House, c. 1940s



Opening of Dalhousie Land at Moray House, 1963



Moray House School of Education students, 2019



THE UNIVERSITY OF EDINBURGH
Edinburgh College of Art

THE SCOTTISH
CENTRE
FOR CONSERVATION STUDIES

Getting Schooled: An Educational Review of Moray House
MSc. Architectural Conservation | Building Analysis | 2021-2022

Dr. Ruxandra-Lulia Stoica
Dr. Geoffrey Stell, Audrey Dakin, Tom Addyman
Group B: Erin Checkosky, Emer Clarke, Kennedy Dold, Alexandros Dimtsas,
Alicia Niebrzydowski, Hannah Wenzel



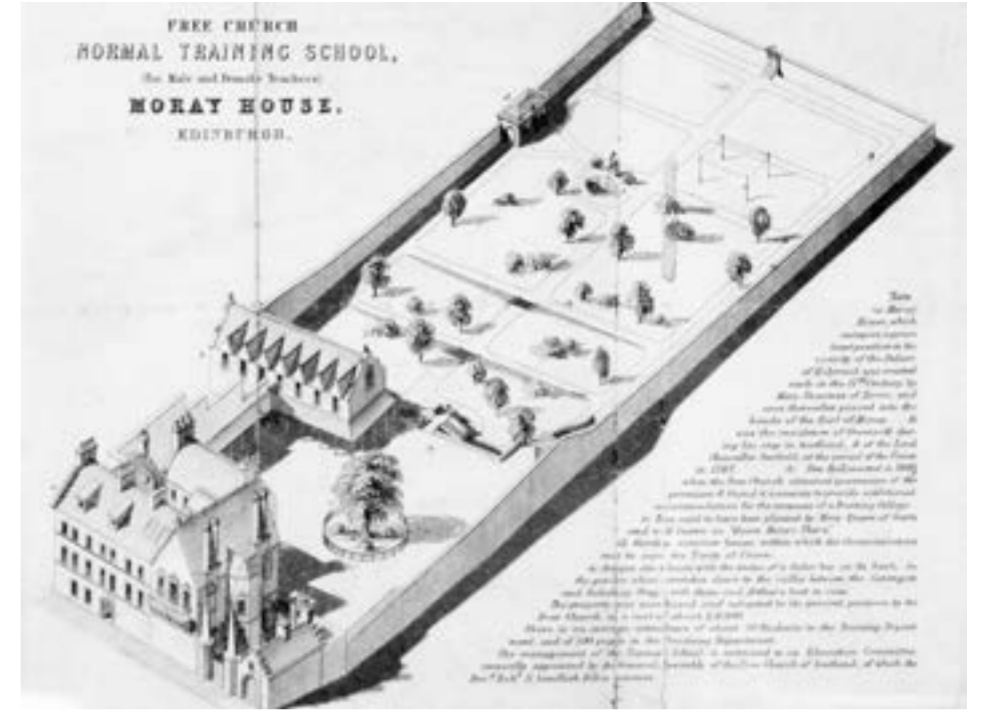
Getting Schooled: An Educational Review of Moray House



Moray House facade, 2001



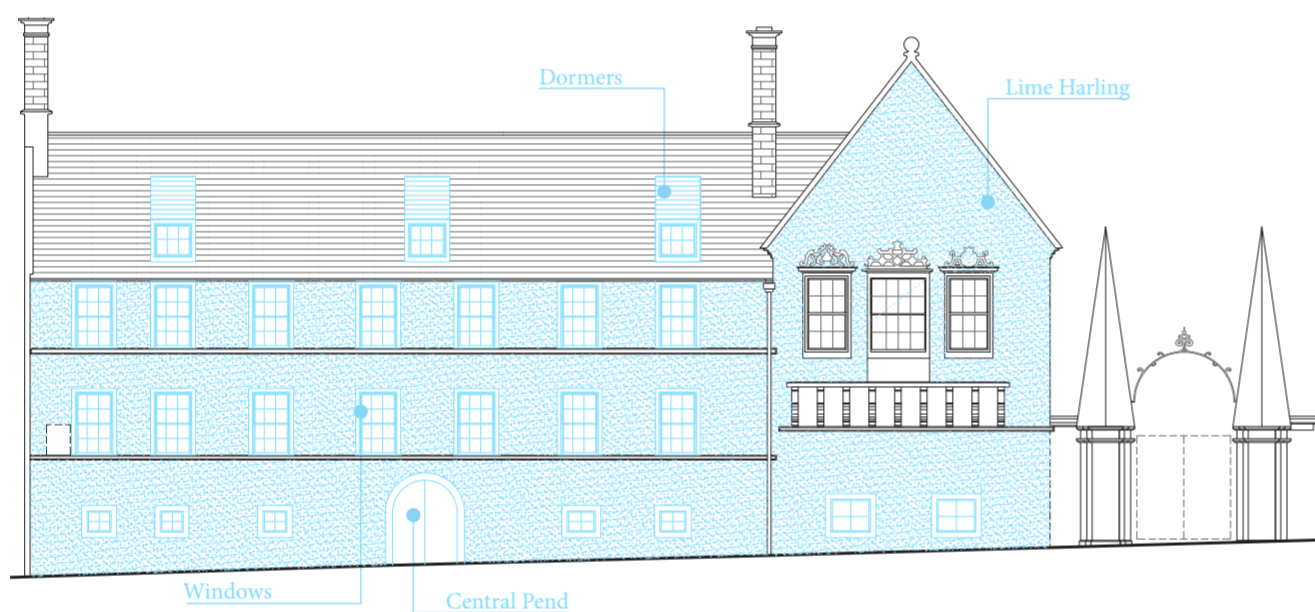
Moray House Balcony Room plaster ceiling



Moray House site plan, c. 1860s

Exhibited through the careful conservation and retention of historic facade elements, Moray House has sustained its prominence within the Canongate of Edinburgh's Old Town. Despite alterations to adapt the building from a single family home to a functioning school, the survival of the Canongate facade and decorative elements add to Moray House's historic character. However, slight alterations to the facade kept the building relevant to its occupants, representing key elements and priorities deemed significant at the time. The building and surrounding structures are physical representations of the social focus and importance placed upon teaching and teacher training in Edinburgh and across the country.

Through the tangible significance demonstrated through the built fabric, surrounding garden, and related buildings, Moray House holds intangible cultural heritage values. These values are representative of Edinburgh's respect for the development of standardized education and also the future needs and challenges of the profession. It is in the intersection and equal recognition of its history, that the cultural strengths of Moray House lie as they show continued renewal and change. The building's history is not limited to the home built for Mary, Countess of Home, but also its life as a linen warehouse, school for children, and 21st century university campus. Moray House continues its life as both a building in practical use and in what it stands for as a center for education today.



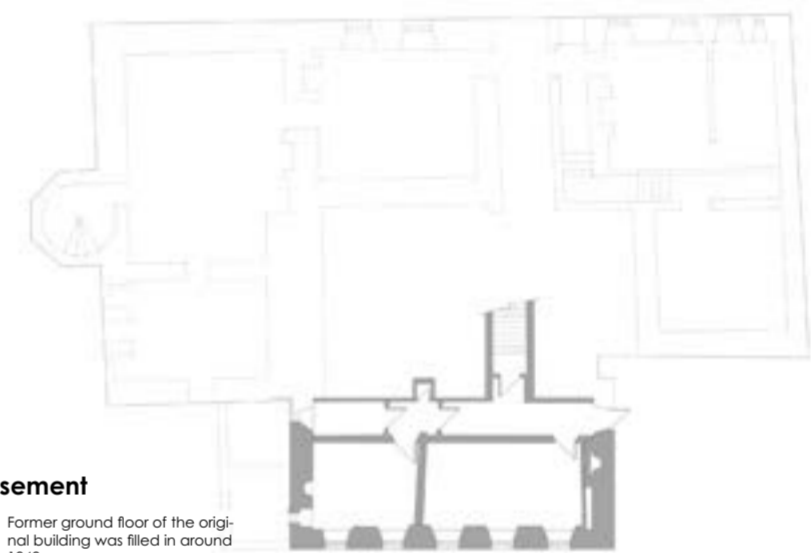
Facade: 1618 - 1845 (Pre-Education)



Facade: 1848 - 1849



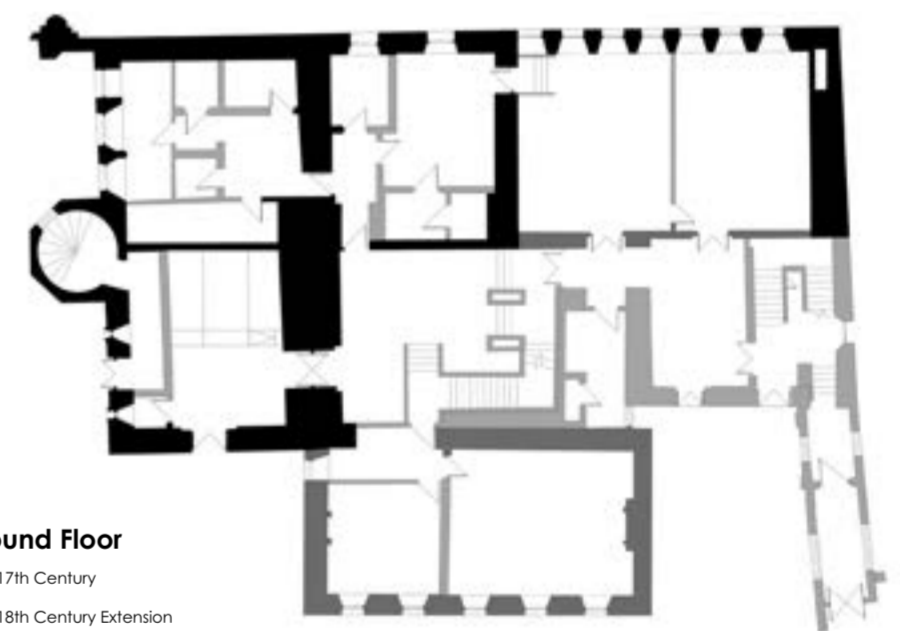
Facade: Present Day



Basement

- Former ground floor of the original building was filled in around 1848
- Current basement layout

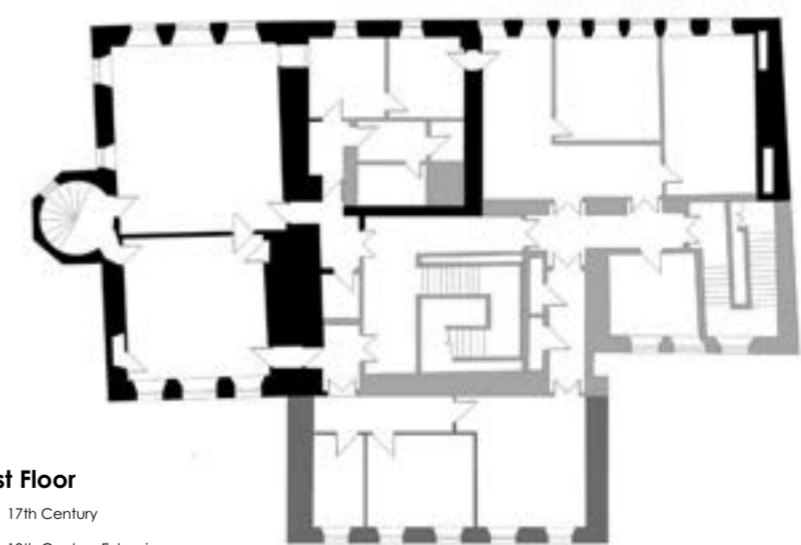
Basement Floor Plan Evolution



Ground Floor

- 17th Century
- 18th Century Extension
- Later / Modern

Ground Floor Plan Evolution



First Floor

- 17th Century
- 18th Century Extension
- Later / Modern

First Floor Plan Evolution



THE UNIVERSITY OF EDINBURGH
Edinburgh College of Art

THE SCOTTISH
CENTRE
FOR CONSERVATION STUDIES

Getting Schooled: An Educational Review of Moray House
MSc. Architectural Conservation | Building Analysis | 2021-2022

Dr. Ruxandra-Lulia Stoica
Dr. Geoffrey Stell, Audrey Dakin, Tom Addyman
Group B: Erin Checkosky, Emer Clarke, Kennedy Dold, Alexandros Dimtsas,
Alicia Niebrzydowski, Hannah Wenzel

