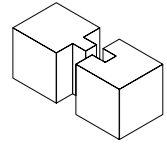


CONTENTS



| | |
|---------------------------|-------|
| INTRODUCTION | - P4 |
| BRIEF | - P6 |
| RESEARCH | - P8 |
| Research Plan | |
| Suitable Activities | |
| Active Workshops | |
| Literature Analysis | |
| Case Study | |
| ITERATIVE PROCESS | - P16 |
| SCHEME PROPOSALS | - P18 |
| CIRCULATION | - P20 |
| ZONING | - P22 |
| PLANS AND SECTIONS | - P24 |
| Plan Drawing | |
| Section Drawing | |
| Detail Drawing | |
| BIBLIOGRAPHY | - P32 |





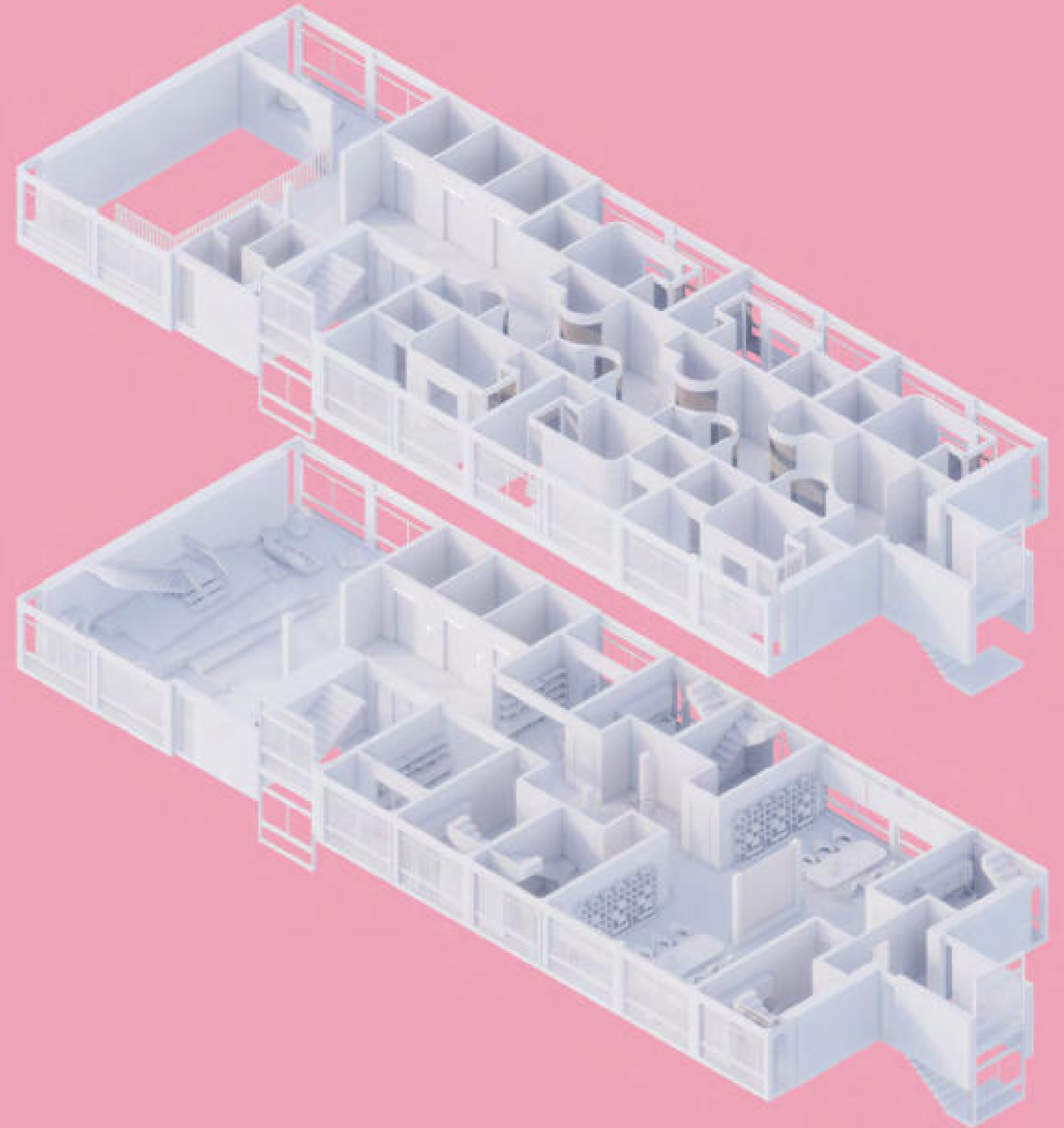
2022

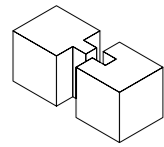
SYNTHESIS PROJECT

Timeline:

25/05/2022–08/08/2022

The academic year revolves around one specific building - 40 George square- and this project is no exception. This is a different design project; it can be of any scale and has close links to the previous two-semester projects. We could have chosen to develop any earlier projects as a background to the SYNTHESIS project, addressing my problem with the interior. Also, as we proceed in this project, we need to come up with a manifesto for the interior, i.e. define my interior, and then develop, generate and respond to it around that manifesto.





THEME AND BACKGROUND

Based on the CONNECTING's overall 40GS proposal, my 40GS design proposal is primarily functional for temporary accommodation to solve the student housing problem (many student residences have rental issues, such as rental periods that do not coincide or conflict with student schedules).

Also, My manifesto mainly presents thoughts on spaces for comfort and storytelling. What kind of private and activity space do students need, and how to facilitate connections between the arts.

For this project, I intend to deepen the floors of a representative part of the residential space, namely the third and fourth floors. Given that the period between June and August is the time of graduation exhibitions and new student intake at the University of Edinburgh and most UK universities, these two floors will be used primarily for art and design students to store, live and create.

In addition, the space will be interconnected with the surrounding interactive spaces, with communal studios, communal discussion rooms, breakout areas and private workrooms. This completes the design of a diverse collective community within a small area.

LENGTH OF STAY AND HOW TO BOOK

- The accommodation is available for rent for three days to one month, of which extensions are possible.

- Customers can select and book rooms by telephone, website or relevant email address.

CLIENT

- The accommodation on the third and fourth floors are aimed at students in art and design disciplines and need to be booked online in advance to provide them with storage space and accommodation.

- The co-collaboration and lounge areas are open to all students throughout the year.

- Single workshops(Hush work pod) need to be booked online in advance and are open to all students.

SITE AND USE

The site will be located on the third and fourth floors and primarily for accommodation, relaxation and interactive sharing. It will include double dormitories, lounge areas, whiteboard rooms, single studios and communal meeting areas.

1/. Double studio: a residence for students of art and design disciplines with a combination of creative workshop and accommodation. The rooms are on two levels, with the 1st floor being a kitchen and workplace and the 2nd floor a private space.

2/. Hush work pod: Single working room with multimedia communication, located in the corridor on the fourth floor.

3/. Whiteboard room: Available for students to share inspiration and sketch.

4/. Lounge area: a social area for chatting and relaxing.

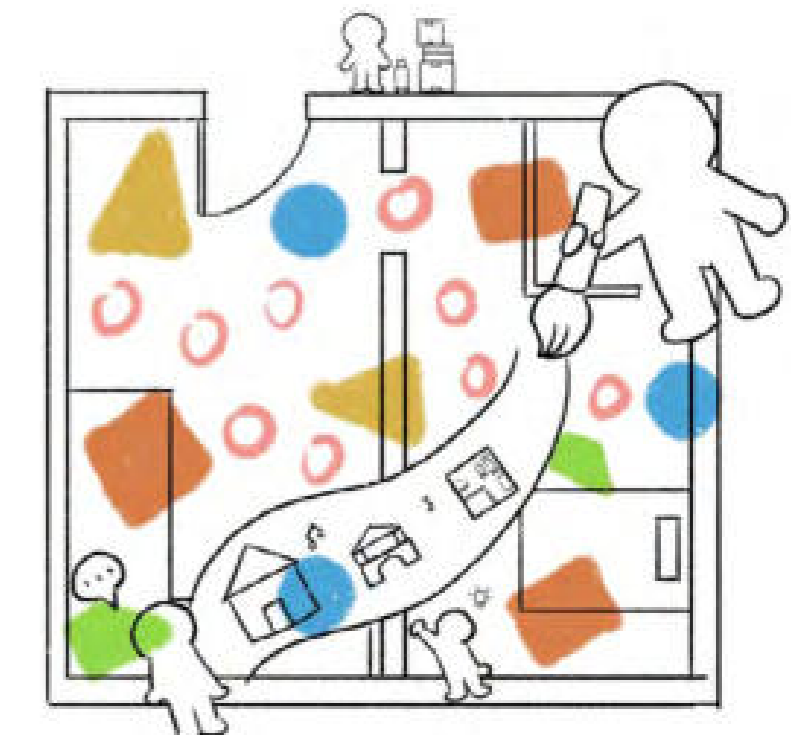
5/. Public Discussion Room: large meeting tables are available for discussion.



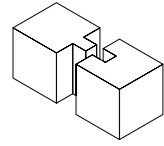
Imaginary Sketches

MANIFESTO

Interior design connects people to homes, people to architecture, and people to stories. Building a comfortable home requires consideration of the functional needs of the interior, followed by the relevance of design and art to the occupants. In addition, the interior is a storytelling space, and interior design needs to give the user enough manoeuvrability and flexibility to have a say in the space. The interior design product will evolve, and it will be a collaborative process with the user.



Imaginary Sketches



OUTLINE

RESEARCH PLAN

My research program intends to further explore and analyse the theme of collaborative design and interior wellbeing as a way to support my project. As my project is about indoor living and spatial interaction, and as the residence is a diverse and collectively integrated space, "my project is about considering the future of interior planning for small spaces and the possibilities of how it can meet the needs of the majority of people". So exploring community development, indoor comfort, and sensory interaction will help extend my project further.

HOW:

1: I will collect secondary materials, such as graphic information from relevant websites and video interviews, as the primary object of analysis. Comparative analysis, online tours and visits to representative buildings and interiors for examination, where the things to be researched can be divided into different functional and geographical ones.

2: I will conduct some interesting observational experiments to observe the human behaviour that may be present in different functional spaces.

3: I will gain a more specific and realistic understanding of interior materials and lighting through first-hand visits, which may include some manual experiments.

RESEARCH I

SUITABLE ACTIVITIES: (DATA + OBSERVATION OF EXPERIMENTAL RECORDS)

The workshop is more than just a workplace. It is a space that supports, motivates and acts as a catalyst for innovative ideas.

Two main activities take place in the office - concentration and communication. Therefore it is essential to have a quiet work area and different-sized communication areas. In addition, with 50% of office meetings being held with 2-4 people, it is important to note how communication styles and outcomes will differ between odd and even groups. As this floor is mainly for students of art and design disciplines, it is important to observe and note the collaboration patterns associated with them to arrive at an optimal solution.

I recorded the following observations in the ECA classrooms and cafes, the library, and the social area of the student residence:

- From my analysis, it seems that ECA students prefer to work together and collaborate in even numbers. They usually bring laptops, notebooks, and other portable devices to discuss and study in cafes and quiet workplaces. During breaks, groups of two or more people generally engage in conversation or walk around in a different environment; students in solo activities prefer to play on their phones during breaks.

- Observations from the student residences show that most students with two or more people play sports during breaks, such as table tennis, table soccer or swinging outdoors, while students with single activities go to buy drinks or return to the residence for a break.

Research reports (current) Related data from Nowy Styl's, allenfairview, desktime



Site Sketches

RESEARCH II

ACTIVE WORKSHOPS: (DATA AND LITERATURE ANALYSIS)

Efficient work requires adequate rest. A 2014 study found that the most productive people worked for 52 minutes and rested for 17 minutes (Gifford, 2018). These phenomena show the importance of having a good space for rest or recreation when people are under work or study and the need for both the room and the person to combine work and rest.

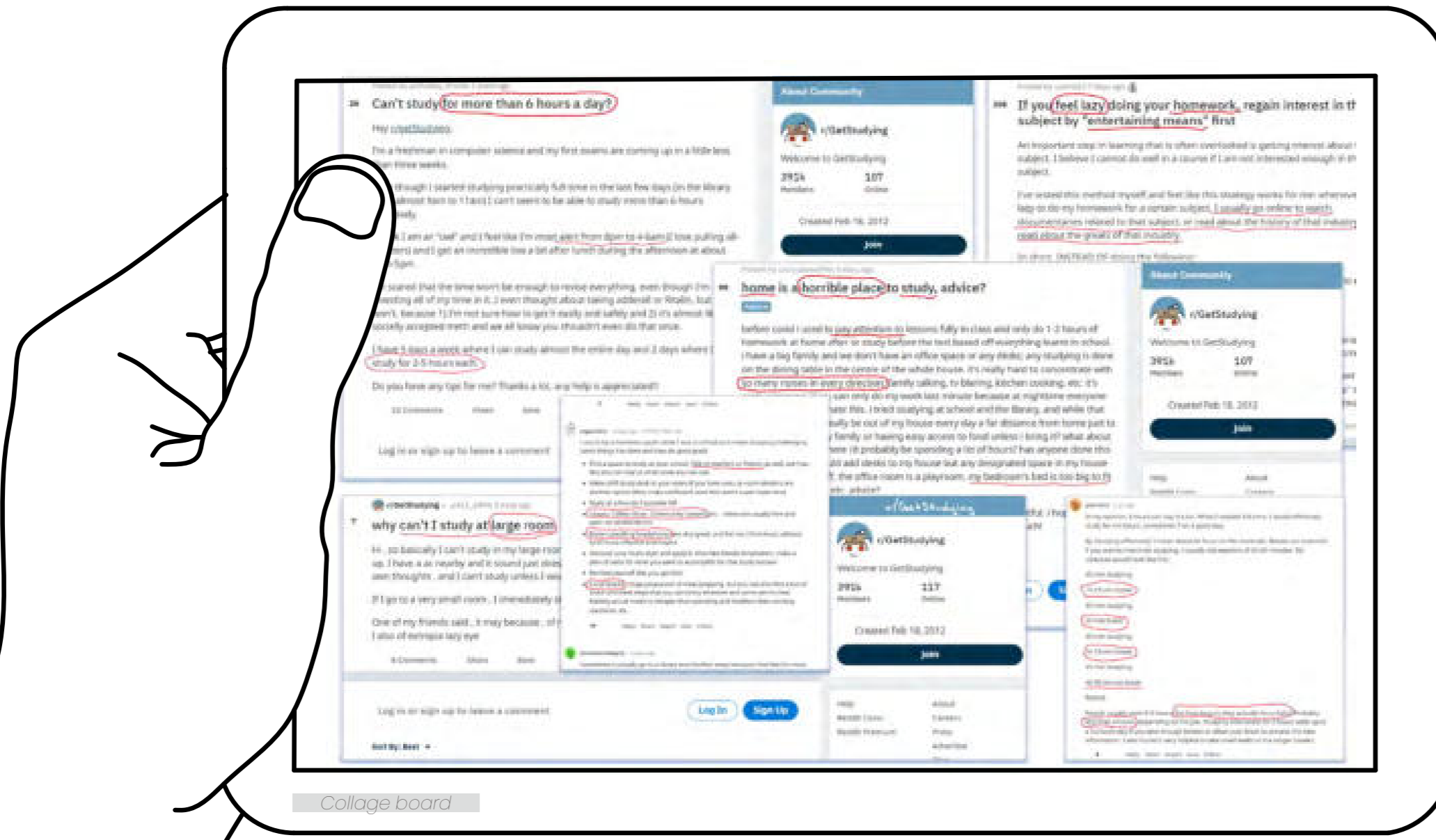
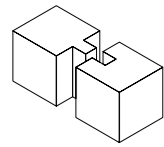
Image from School Spaces for Student Wellbeing and Learning (2019)



Space of wellbeing and schooling



Capability integrating wellbeing, education and design

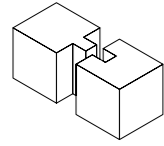


RESEARCH III

GIVING USER AUTONOMY: (LITERATURE ANALYSIS + REVIEW RESEARCH)

Don't schedule your life around school, schedule school around your life (Charlotte, 2021). This is an interesting comment I read in a Reddit forum. A comfortable space to study or work in should give the users autonomy so that they are not confined by the space and can participate. Participation in the space here does not necessarily entail engagement with the room's design but rather adjustments to the space, such as traces of use, furniture being moved around, etc. The interior will evolve; it is a collaborative process with the user.

Social spaces in high-rise buildings are often separated by walls, with two people who don't know each other sharing a wall. With the widespread availability of mobile phones and smart products, most people living in high-rise buildings have to make appointments before visiting other people. As we become more independent and our privacy becomes more important when we are in high-density constrained spaces, private and autonomous spaces are more important than ever (Yang and Springer-Verlag GmbH, 2016). Therefore, the space's design and distribution need to provide areas for collaboration, but also a place for quiet and solitude, and a space for self-study is essential for university students. The artist's work sometimes lasts more than half an hour, two hours, sometimes even a day or several days, and providing a mixed and selective space will help one focus on what one is doing, rather than thinking 'where is the next place to work'.



RESEARCH IV

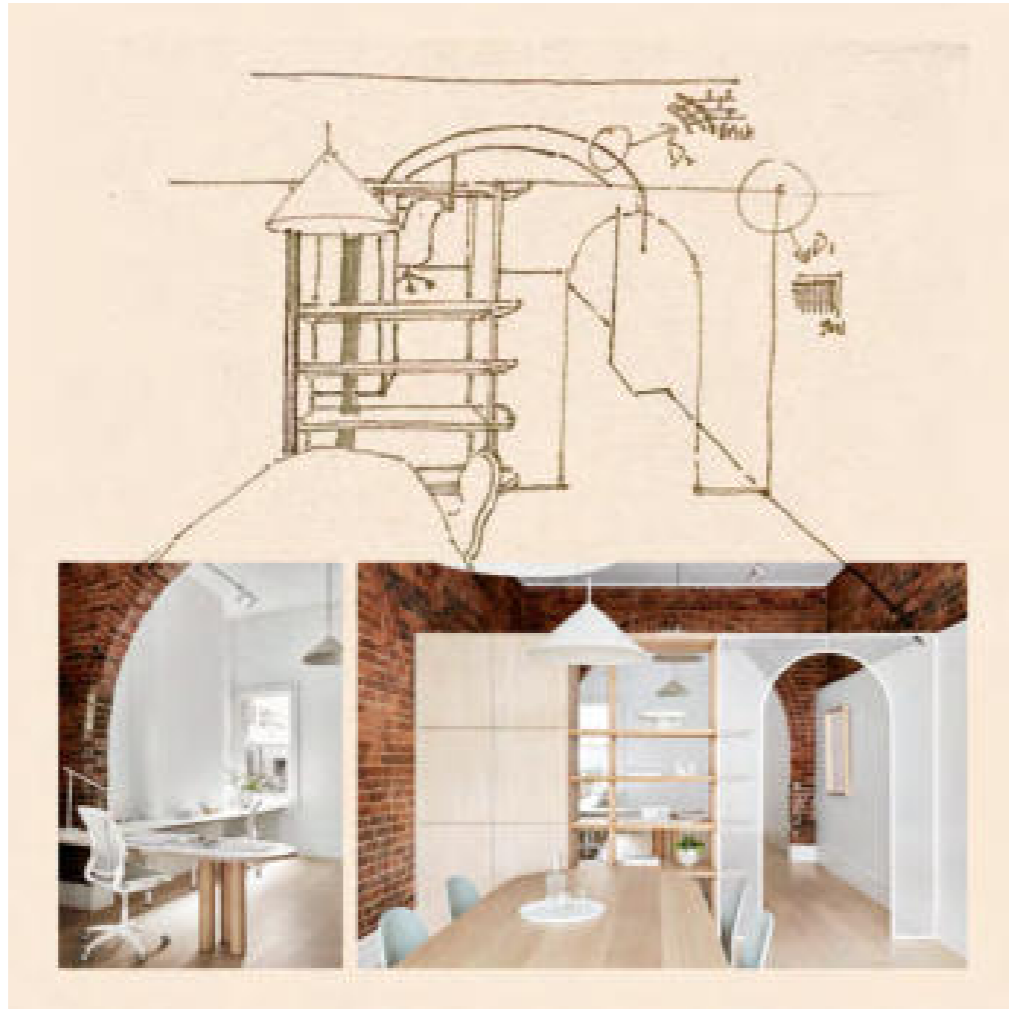
SENSES AND EMOTIONS: (COMPARATIVE ANALYSIS + CASE STUDY)

PRECEDENTS 1:

Hawthorn Studio / Wallis Design

This is an office interior design for a workplace that contains a semi-private studio, collaboration area, kitchen and library area. The concept design draws inspiration from the Japanese aesthetic, using simple lines with natural materials and comfortable furniture. Open shelving connects the different spaces and allows natural light to pass through, allowing for a balance of semi-private and shared spaces. The project is not an ample space, approximately 50 square metres, and its spatial division, use of materials and retention of existing features inspired me to design the room in a way that is both artistic and minimalist yet functional.

link: https://www.archdaily.com/982605/hawthorn-studio-wallis-design?ad_source=search&ad_medium=projects_tab



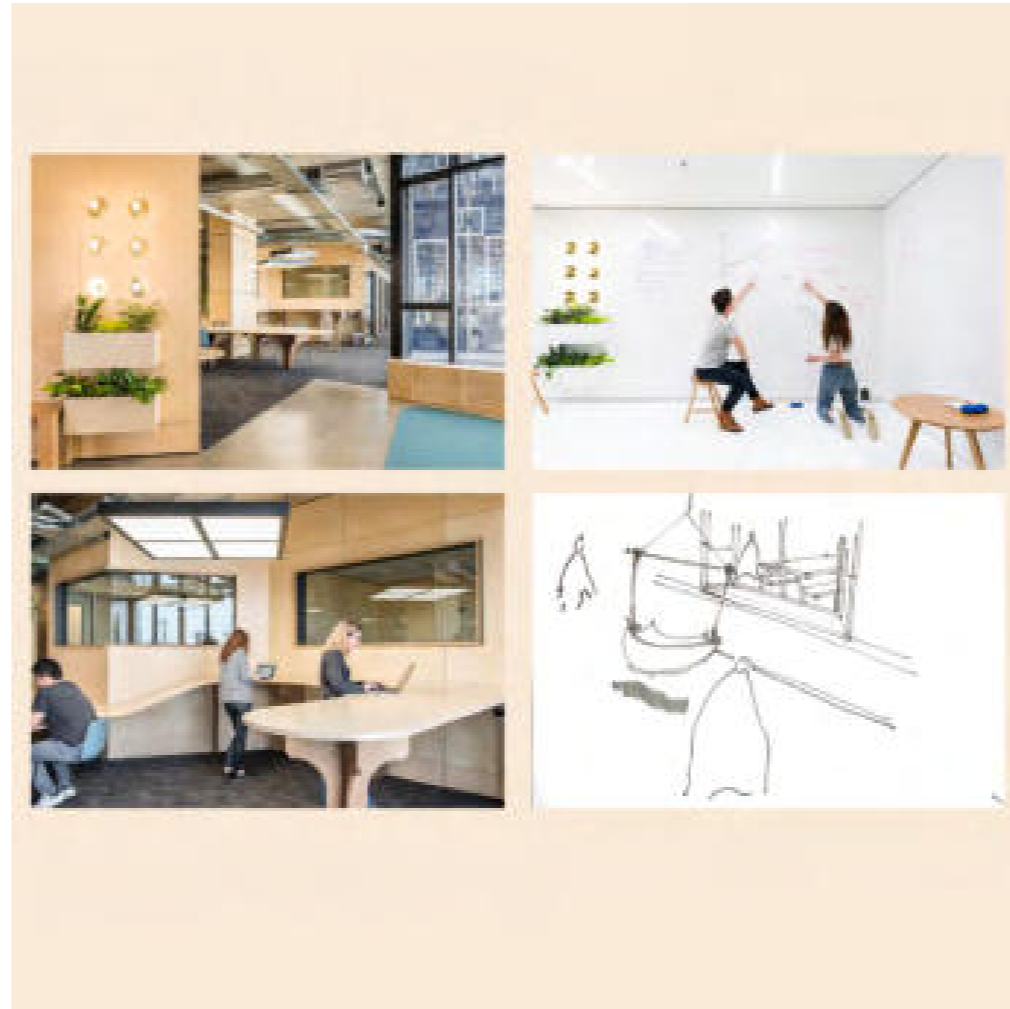
Reference images
(Bottom) Archdaily
(Top) Sketch

PRECEDENTS 2:

Co-working space over three floors in the South Melbourne Commercial Building / Siren Design

The brief for the project was to design a space that was “conductive to creativity, productivity and that promoted wellness” — key aspects of The Commons brand. The space contains essentially all the basic functional areas, including a communal kitchen, display space and workshops for various numbers of people. I really like the design of the activity areas. The whiteboard area helps users to communicate creatively, the hanging chairs and the gym add more possibilities for breaks in the workplace, and the different sized workstations give more options for different types of users. These are highly informative and helpful for my project, making the space more interesting and attractive.

link: <https://www.indesignlive.com/projects/commons>



Reference images
(Top) Indesignlive
(Left below) Indesignlive
(Right) Sketch

PRECEDENTS 3:

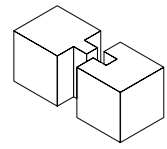
Domesticated Square Apartment / l’atelier Nomadic

This is a renovation of a 70 square metre flat. The designer has transformed it into three bedrooms and an office studio, which also contains basic living spaces such as a hallway, kitchen and terrace, similar to my creative studio room. There are not many structuring walls in the original space, which gives the design more possibilities. The designer has divided the space into horizontal and vertical areas using a grid pattern of divisions divided by metal, glass, and wood. Each room is interconnected and can be crossed simultaneously, transforming the single function of the flat into a more functional project.

link: https://www.archdaily.com/982316/domesticated-square-apartment-latelier-nomadic-architecture-studio?ad_source=search&ad_medium=projects_tab



Reference images
(Top left) Sketch
(below&Right) Archdaily



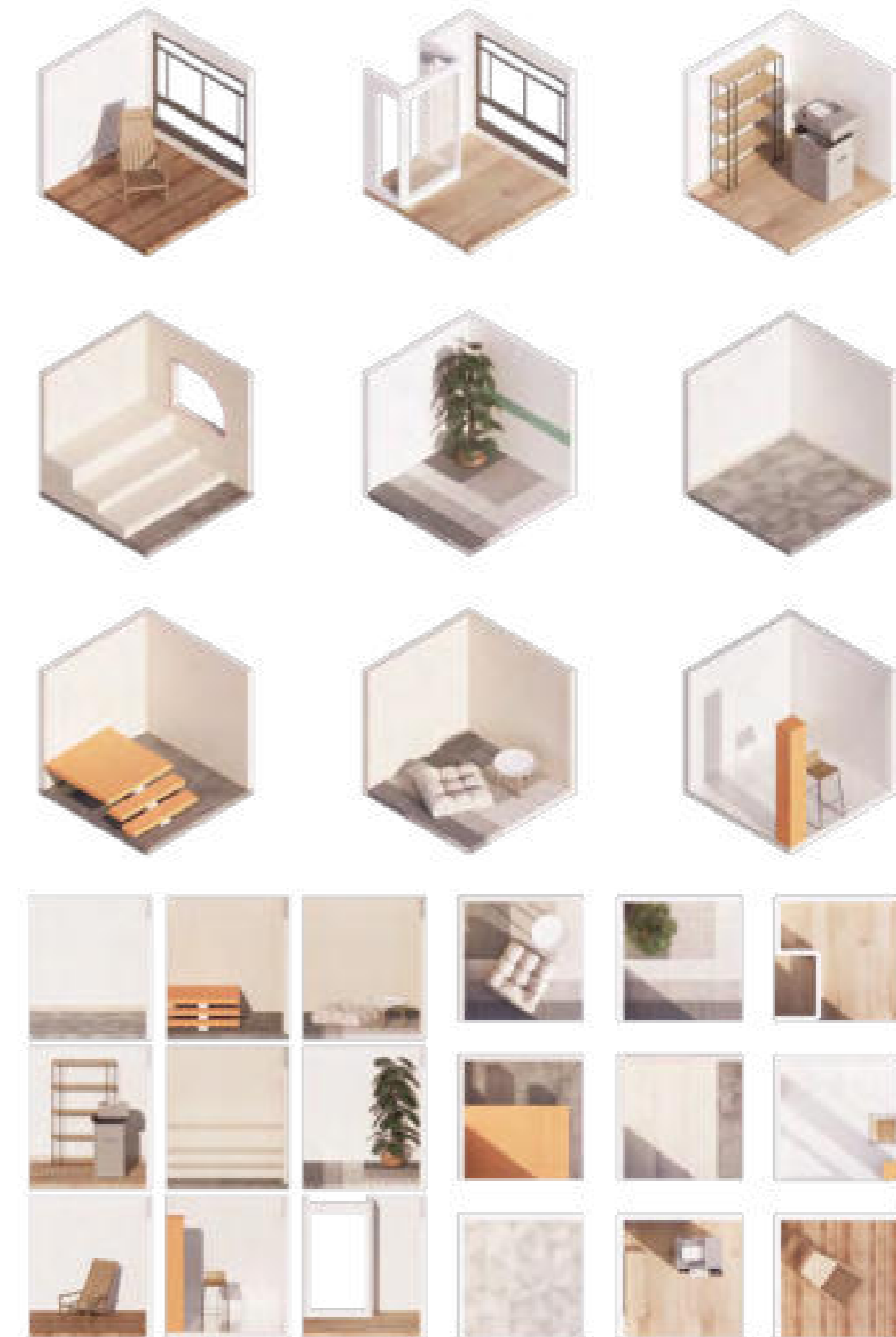
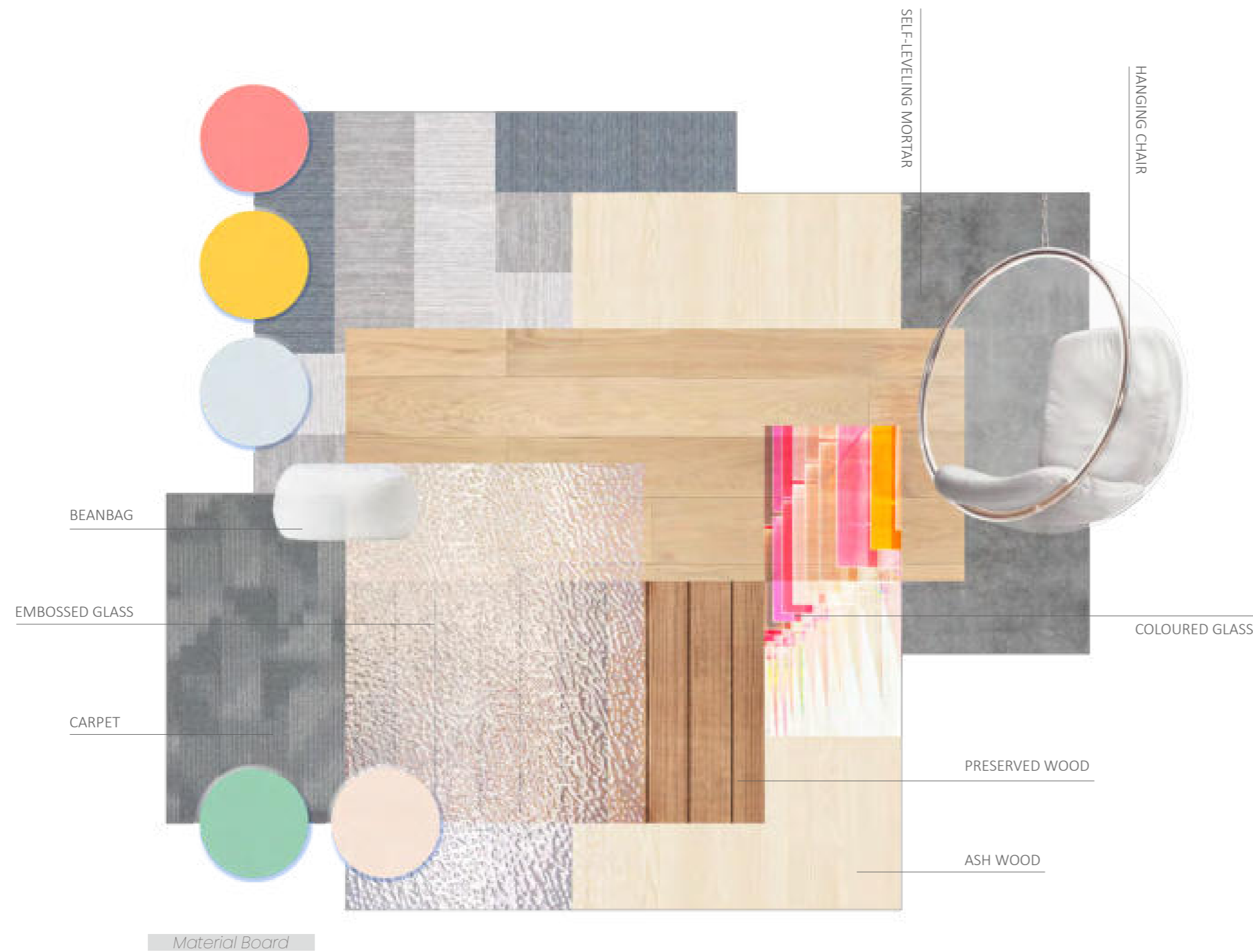
RESEARCH IV

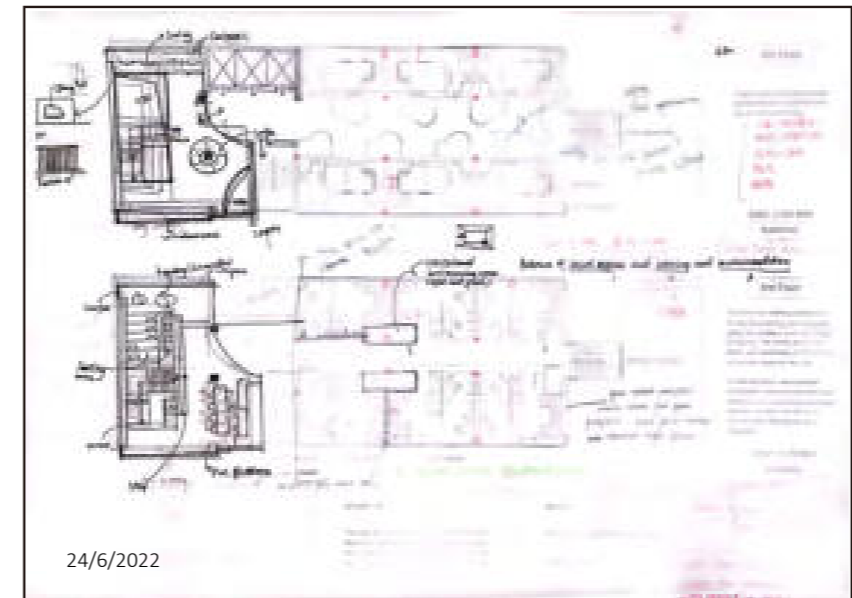
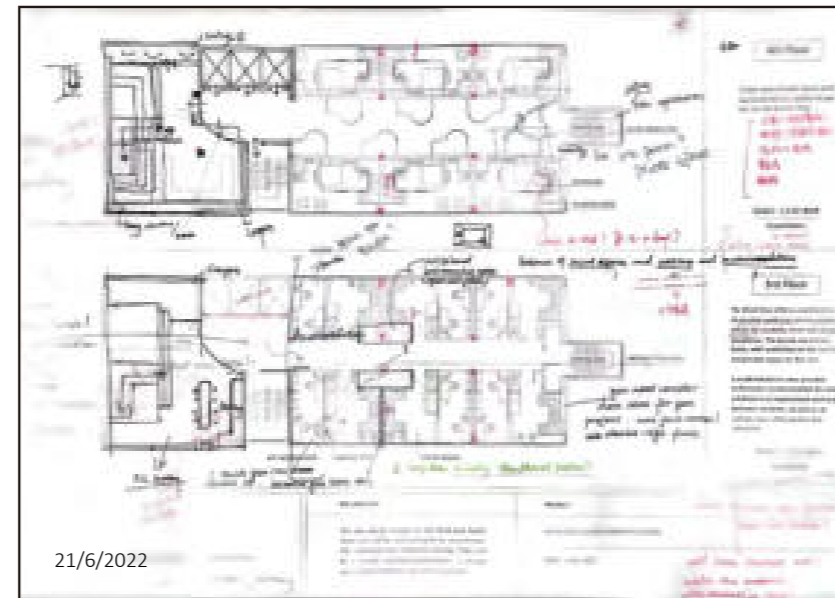
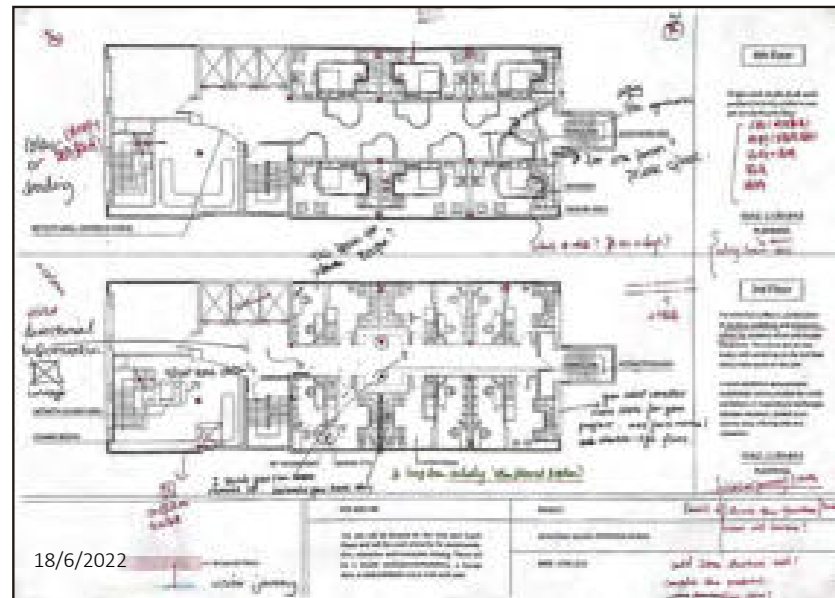
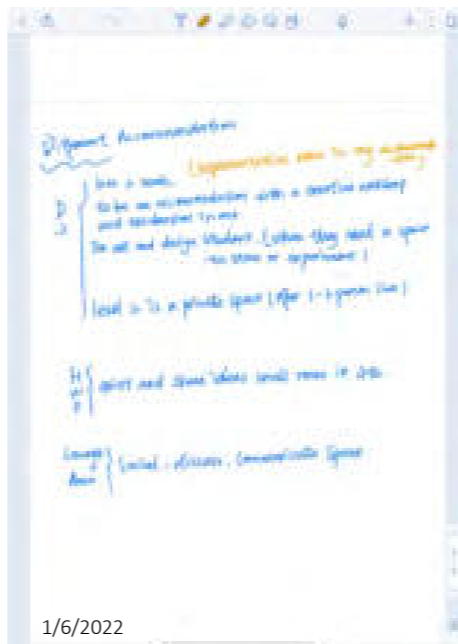
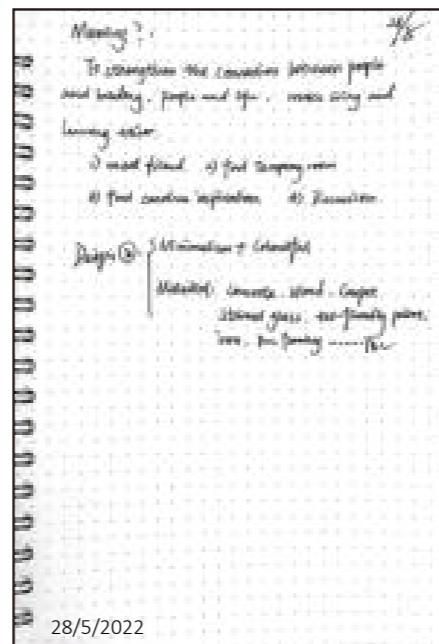
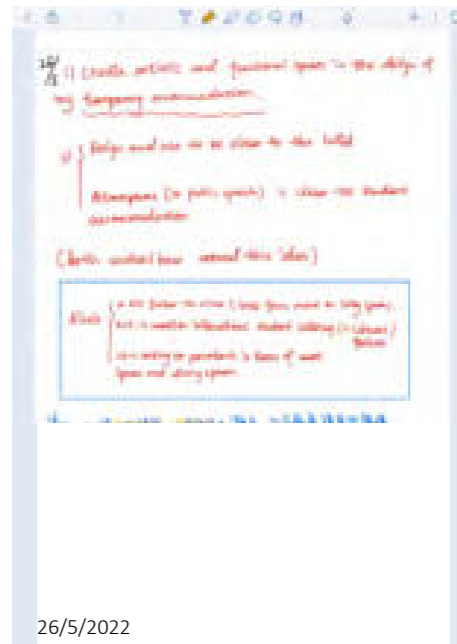
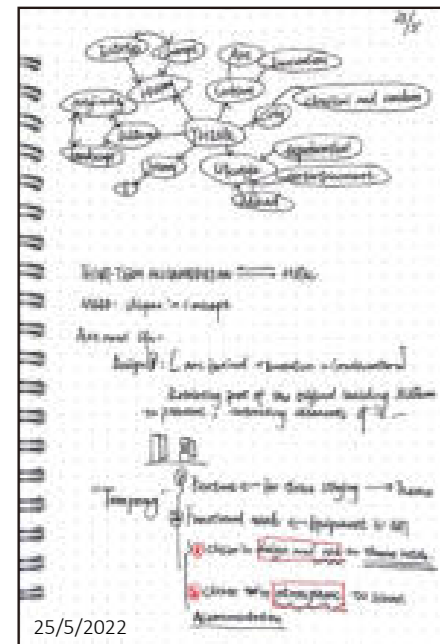
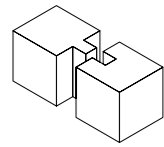
SENSES AND EMOTIONS:
(COMPARATIVE ANALYSIS + CASE STUDY)

Perception and feeling are fundamentally and intrinsically linked, and our sensory systems immerse us (Hughes, Franz and Willis, 2019, p. 261). In space, our first sense is sight, followed by hearing, smell and touch, with taste coming last. The materials used in the different functional spaces need to be considered. In a general studio, most examples use a more light palette and wood, whereas in an art school or creative workshop, a brighter, vibrant palette is used, and the materials are more varied, such as glass, iron, etc.

Material and colour analysis

In this project, I intended to embellish the public spaces with bright colours such as vibrant yellows and pinks and light colours such as light blues and greens that make people feel comfortable and calm. In the choice of materials, I adapted the architecture to the space by using mainly wood and self-levelling mortar; the use of carpets and coloured glass divided the different activity areas; in addition, I chose mostly simple and cosy modern furniture to make the whole space look minimalist and bright.





24/05/2022

DEVELOPMENT

Stage 1:

- 1: Brainstorming: Initial ideas formation
- 2: Identifying themes and clients.
- 3: Comparison with other similar projects.
- 4: Creation of a text design draft.

Stage 2:

- 1: Adjust the size and type of functional space, including the size of common areas, and the way in which activities are carried out.
- 2: Initial sketching
- 3: Project research

Stage 3:

- 1: Comparison of the original CAD drawings to determine the size of the functional spaces.
- 2: Partial design of small spaces.

Stage 4:

- 1: Initial CAD drawing with 5 functional spaces. (Double studio, Hush work pod, Whiteboard room, Lounge area, exhibition area)

Stage 5:

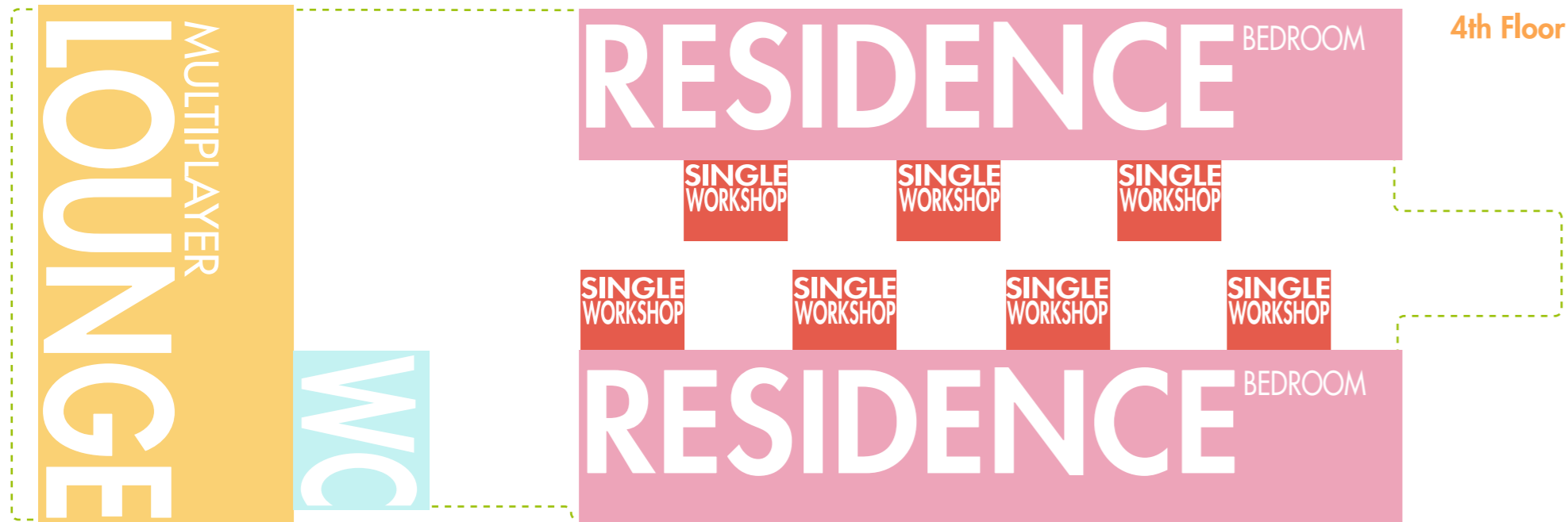
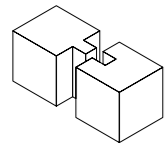
- 1: The design of the functional spaces was adjusted after feedback from the classroom, shifting from four to five functional areas.
- 2: The workshop changed from private to open.
- 3: Adjusted the design of the lounge area to become larger and more enjoyable.
- 4: Adding communal discussion spaces to allow for greater collaboration.
- 5: Adding a whiteboard room for students to exchange inspiration.

Stage 6:

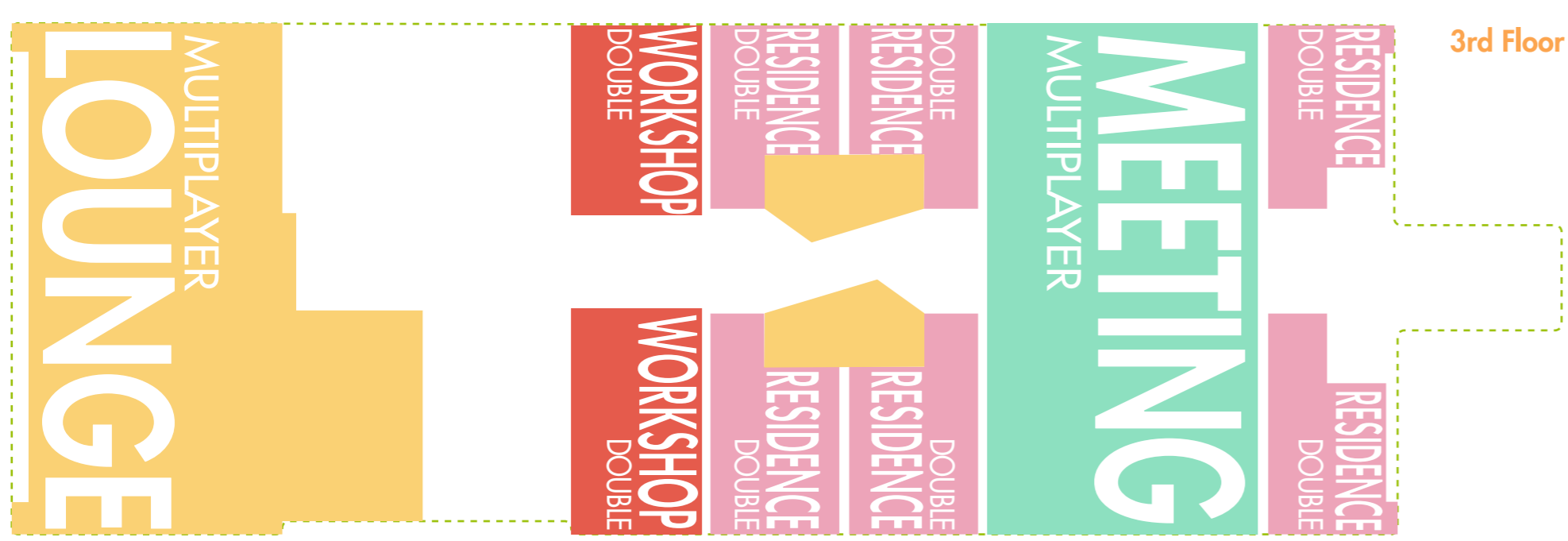
- 1: After receiving feedback from formative, I revised the layout of the common areas;
- 2: The ceiling and walls were designed and rendered.
- 3: Collated information and re-examined drawings.

25/07/2022

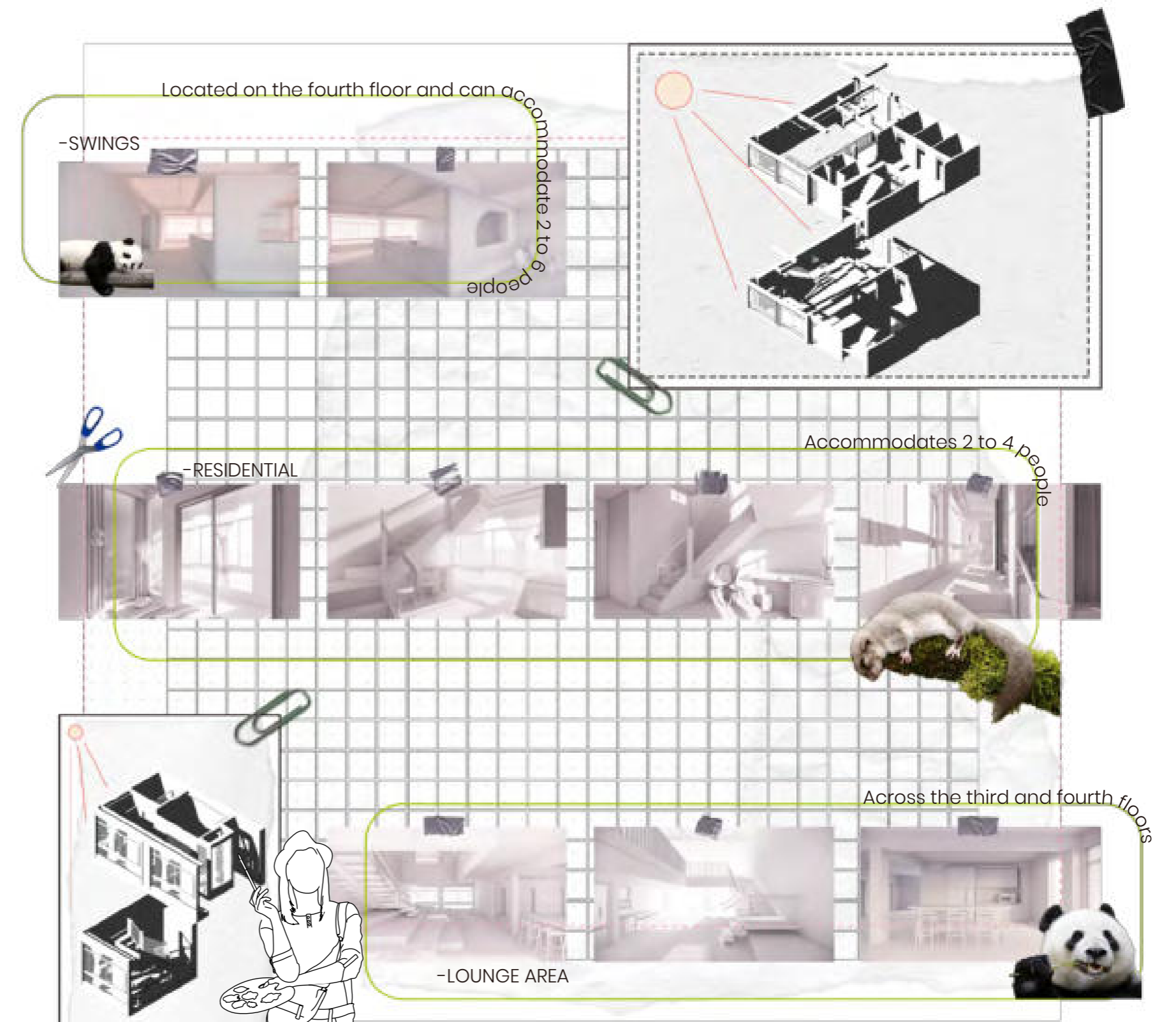
Design stage completed



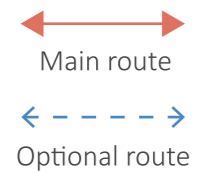
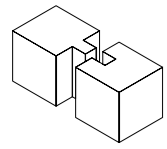
4th Floor



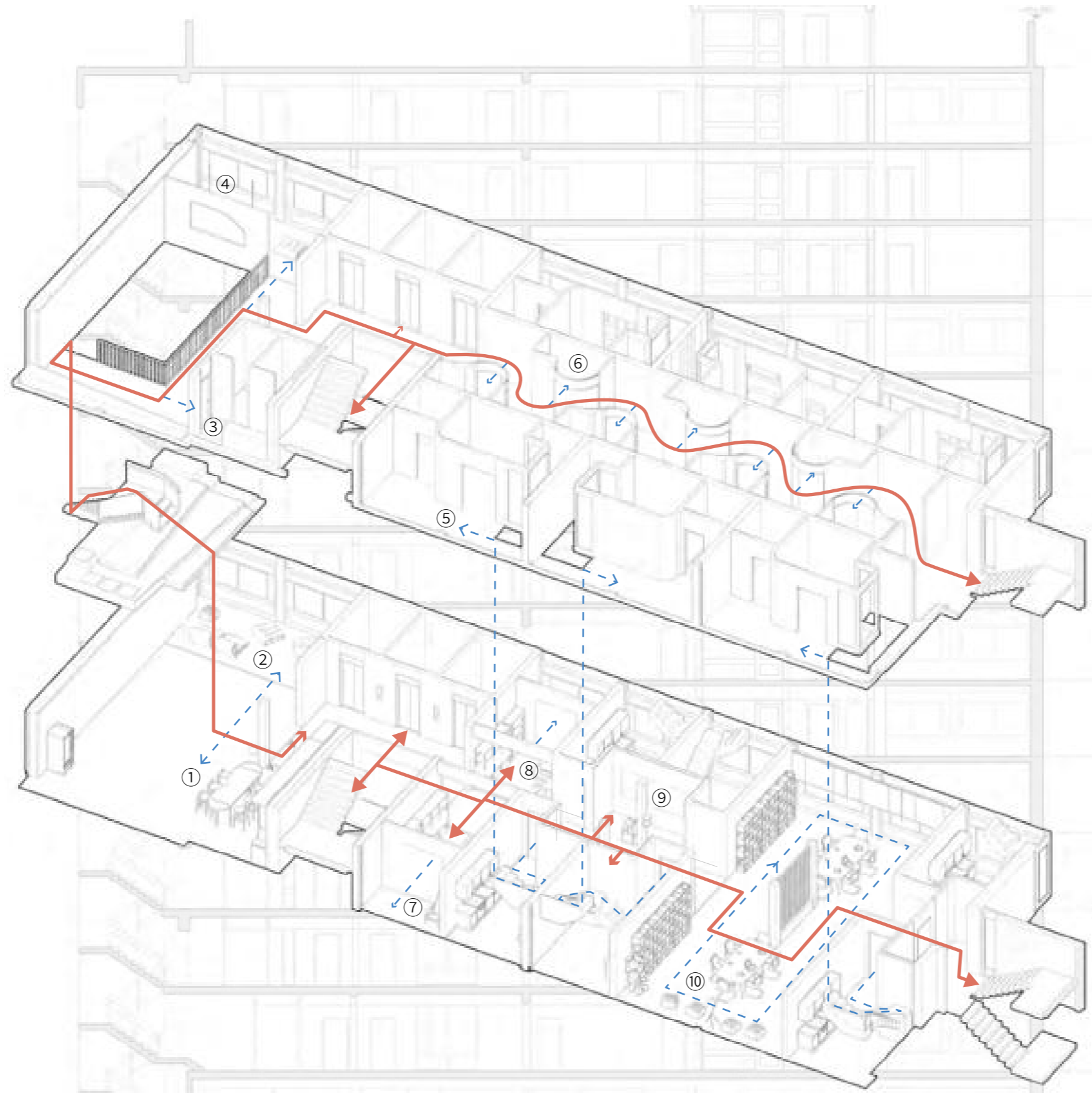
3rd Floor



WHITE MOULD RENDERING



- 1: Public Kitchen
- 2: Lounge Area
- 3: Toilet
- 4: Hanging Chair Room
- 5: Residence
- 6: Work Pod
- 7: Casual Terrace
- 8: Study Area
- 9: Whiteboard
- 10: Meeting Area



Fourth Floor :

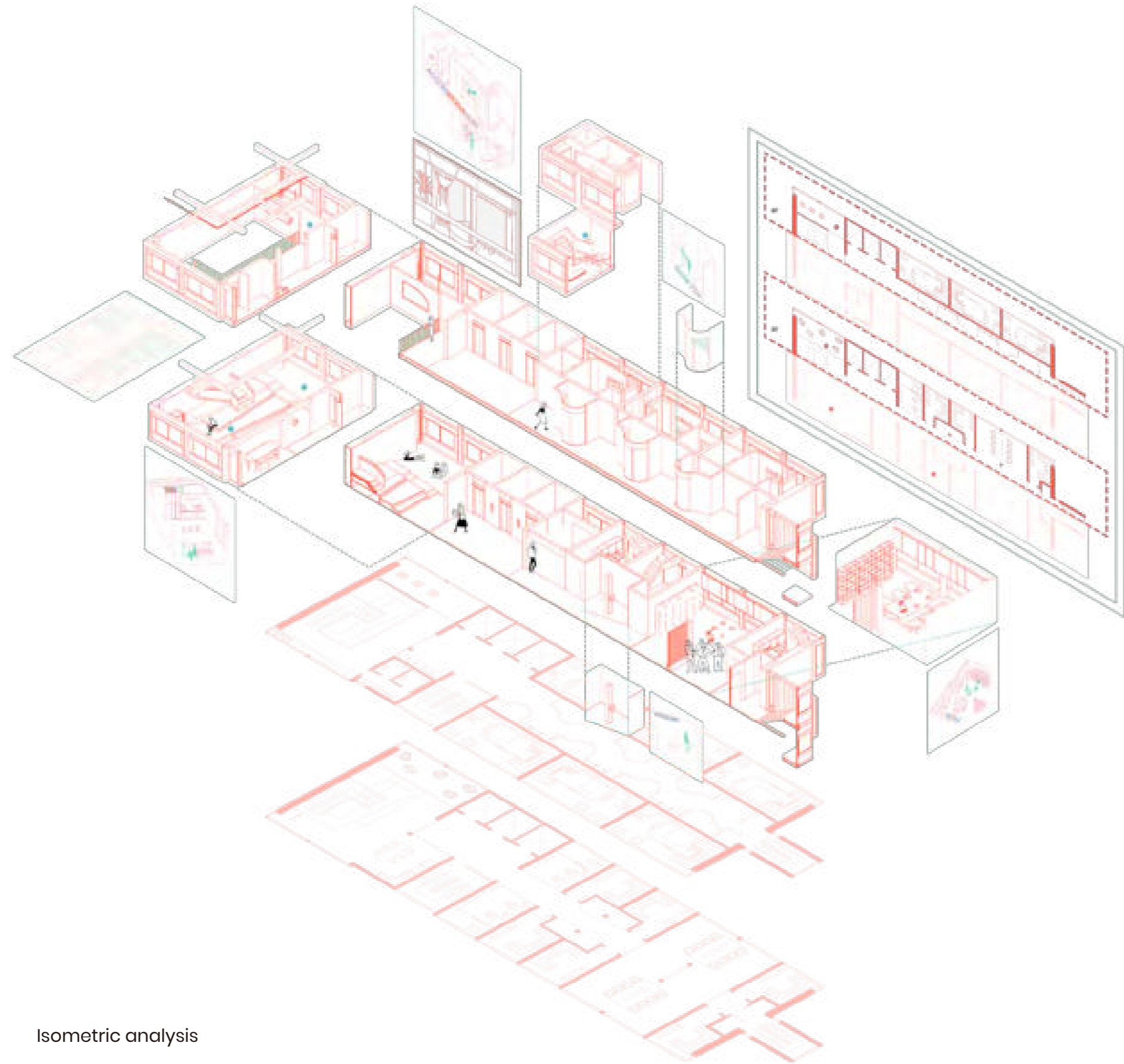
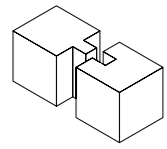
There are three entrance/exit locations on the fourth floor: a lift on the east side, the west side's main staircase, and an emergency exit on the south side. Also, visitors can connect the third floor to the fourth floor via the stairs to the north.

The floor can accommodate up to 30 people at the same time, spread over a common lounge area and private workshops.

Third Floor :

There are three entrance/exit locations on the third floor: a lift on the east side, the west side's main staircase, and an emergency exit on the south side. In addition, visitors can connect the third floor to the fourth floor via the stairs to the north.

The floor can accommodate up to 60 people simultaneously, distributed between the public and private areas.



Isometric analysis



The public area is divided into two parts, the lounge area and the whiteboard area. The lounges on the third to fourth floors are connected and can be linked up and down by stairs, where people from different floors can hold events. Besides, there are hanging chairs, a pantry and other entertainment areas. The whiteboard area is set up in the third floor aisle for students to write and draw.

5

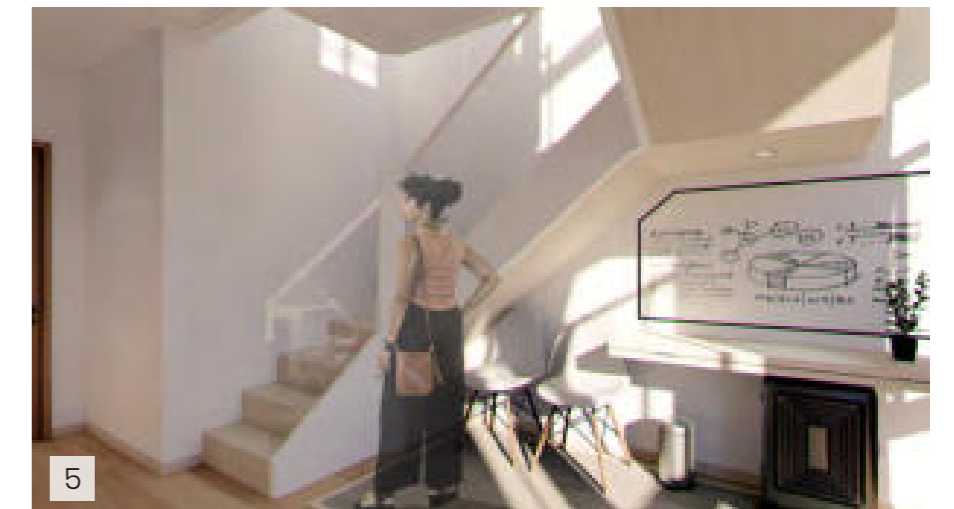
RESIDENCE(DOUBLE STUDIO): 24-38m². For two people. Micro-loft design is used. Beyond the single studio, it has an additional small living room and small workshop, and a bed with tatami is placed in the loft to separate the public space from the private area to a greater extent

1

2

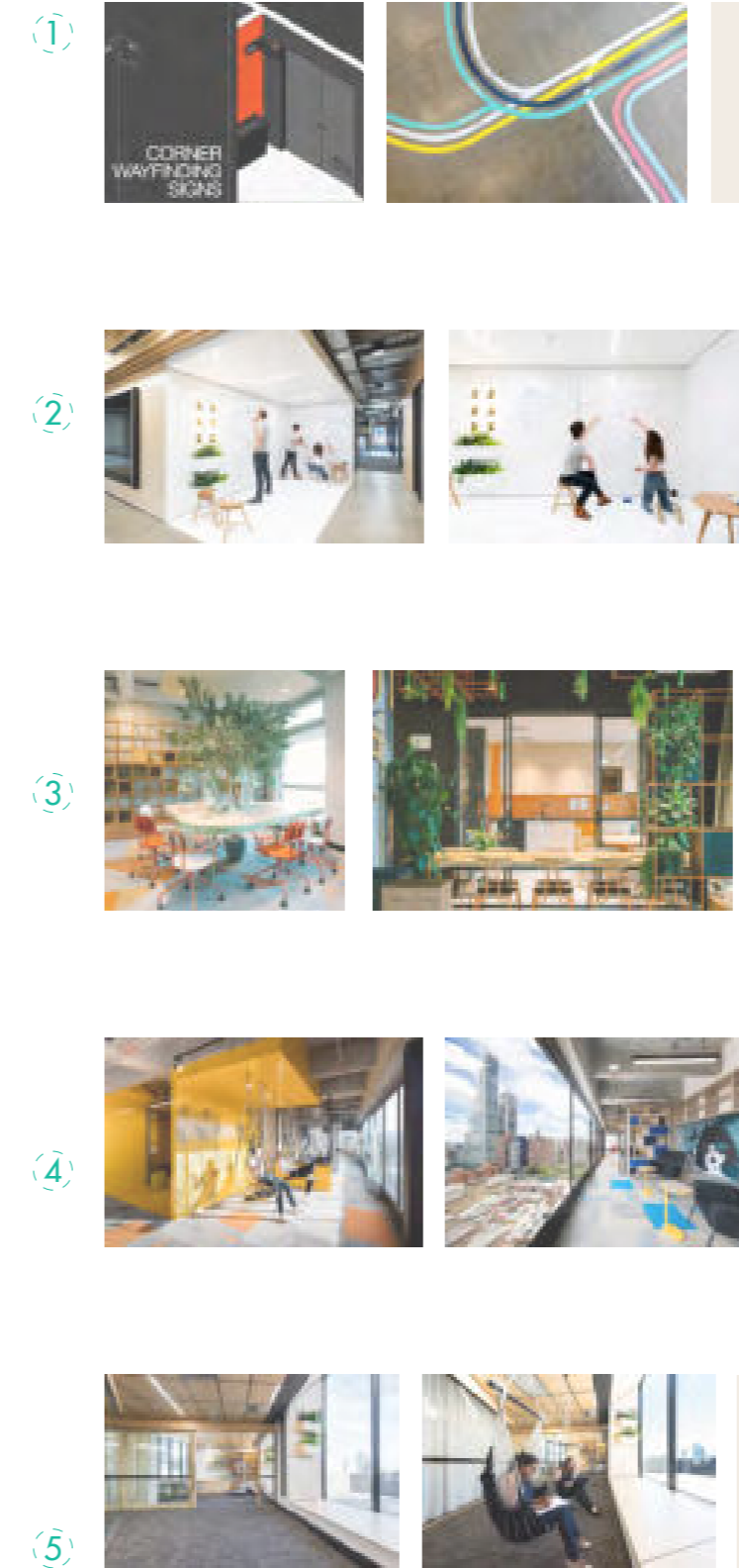
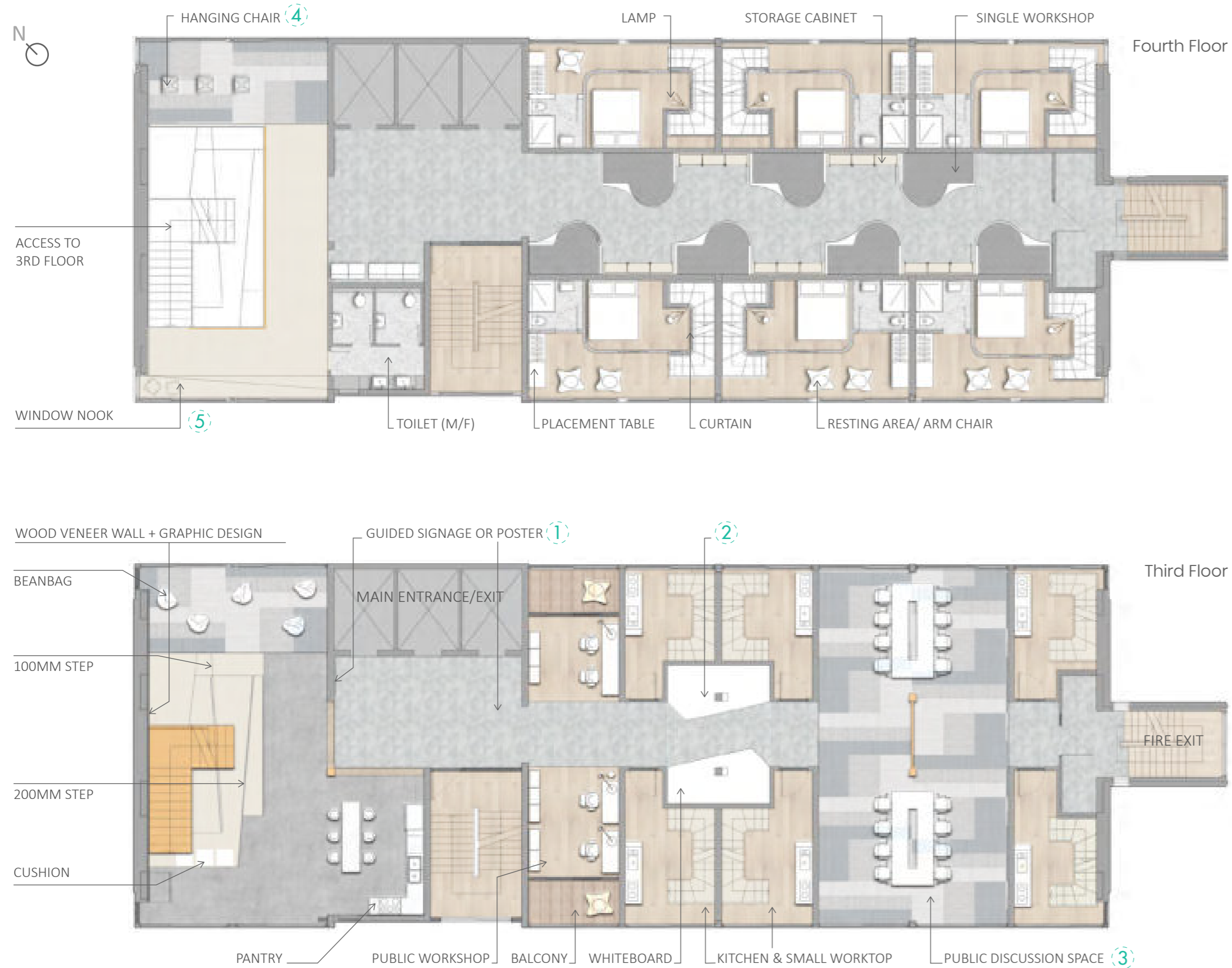
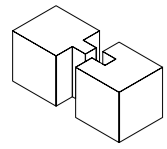
3

4



5

Rendering analysis



Reference: 1) Pinterest 2) thecommonsio 3) Student Depot Gdańsk 4) Livinn Boho Student Housing 5) thecommonsio

SCALE: 1:150 @A3

1m 5m 10m

PLANNING

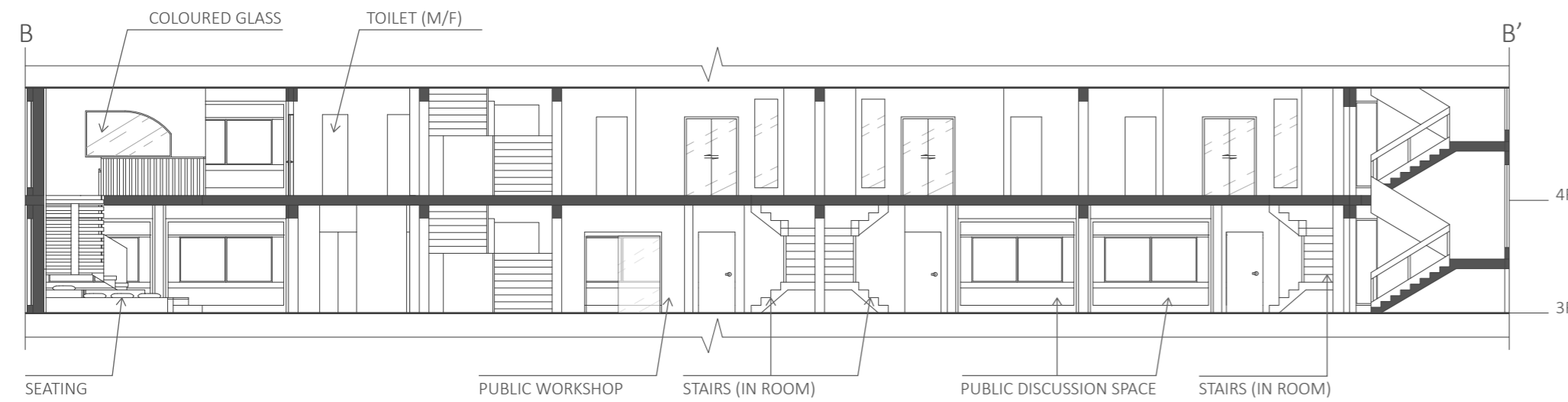
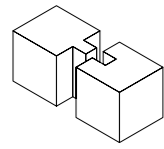
PROJECT:
40 GEORGE SQUARE PROPOSAL

TITLE: THIRD FLOOR AND FOURTH FLOOR PLANS

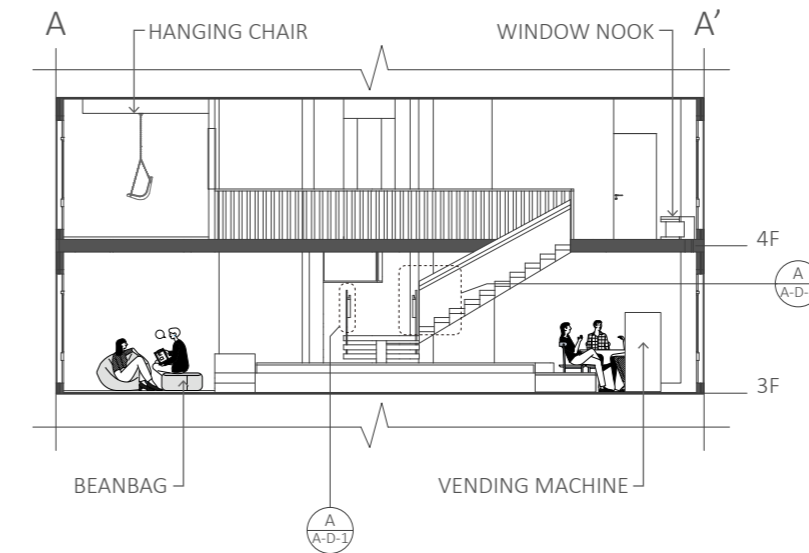
SCALE: 1:150 @A3

DATE: JULY 2022

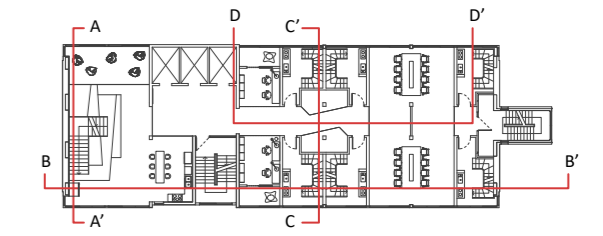
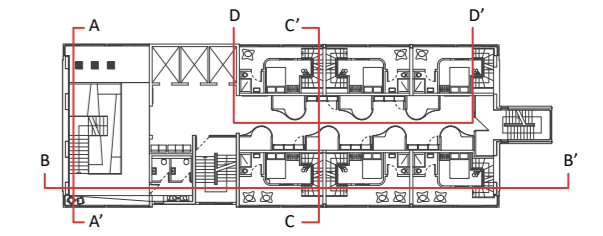
REVISION: 5



SCALE: 1:150 @A3
SECTION - BB'

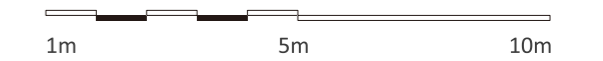


SCALE: 1:150 @A3
SECTION - AA'



1:500 / A3

SCALE: 1:150 @A3



PLANNING

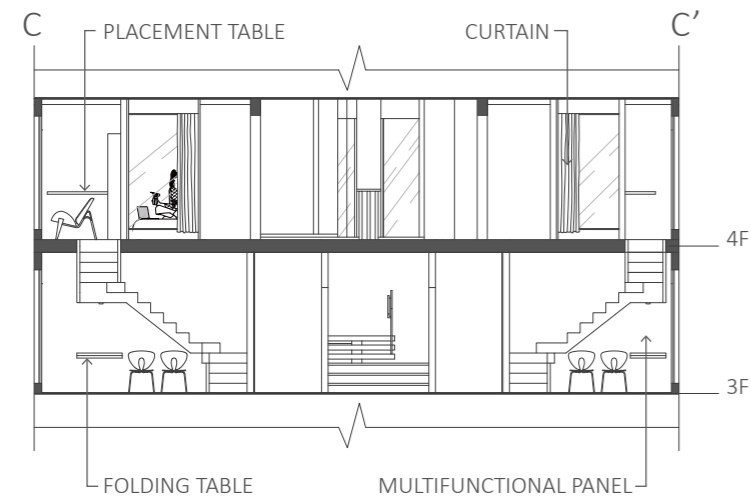
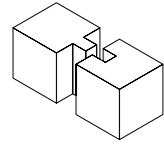
PROJECT:
40 GEORGE SQUARE PROPOSAL

TITLE: MULTIPLE SECTION

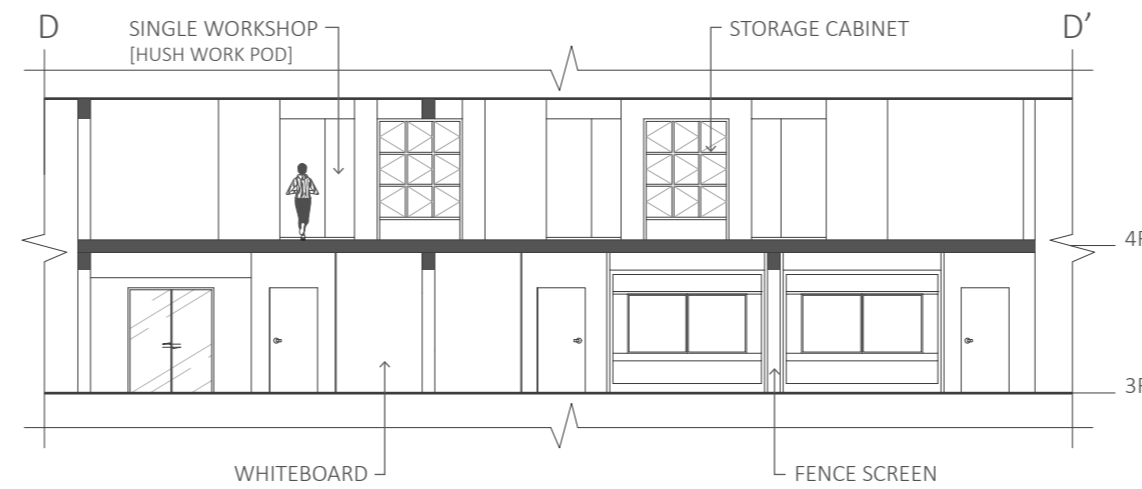
SCALE: 1:150 @A3

DATE: JULY 2022

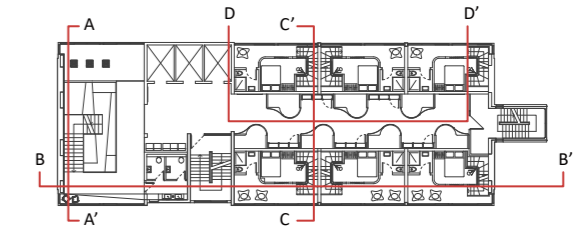
REVISION: 5



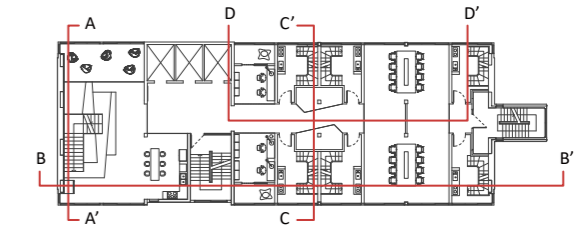
SCALE: 1:150 @A3
SECTION - CC'



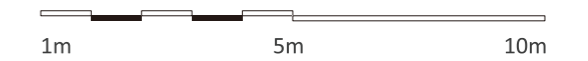
SCALE: 1:150 @A3
SECTION - DD'



1:500 / A3



SCALE: 1:150 @A3



PLANNING

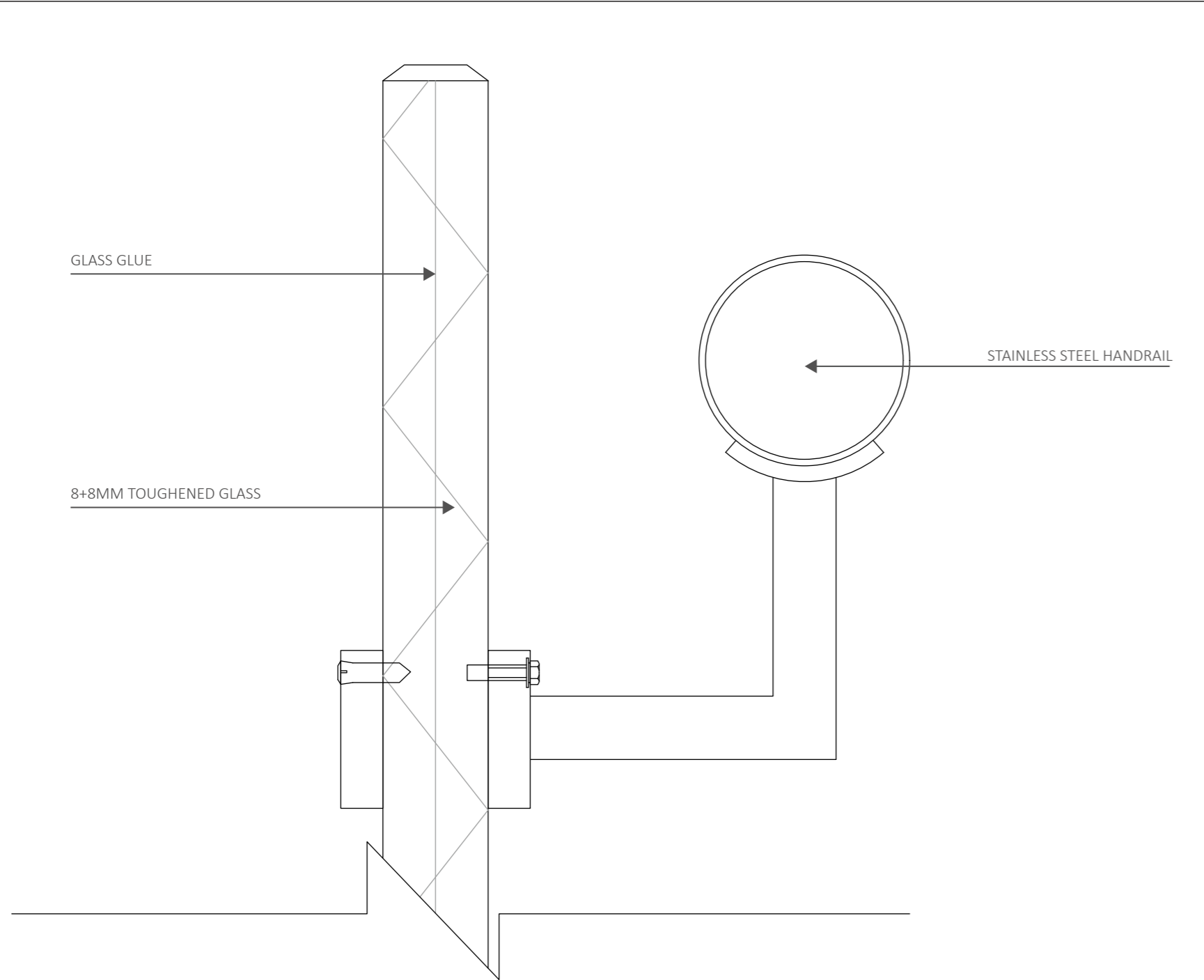
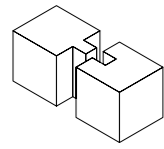
PROJECT:
40 GEORGE SQUARE PROPOSAL

TITLE: MULTIPLE SECTION

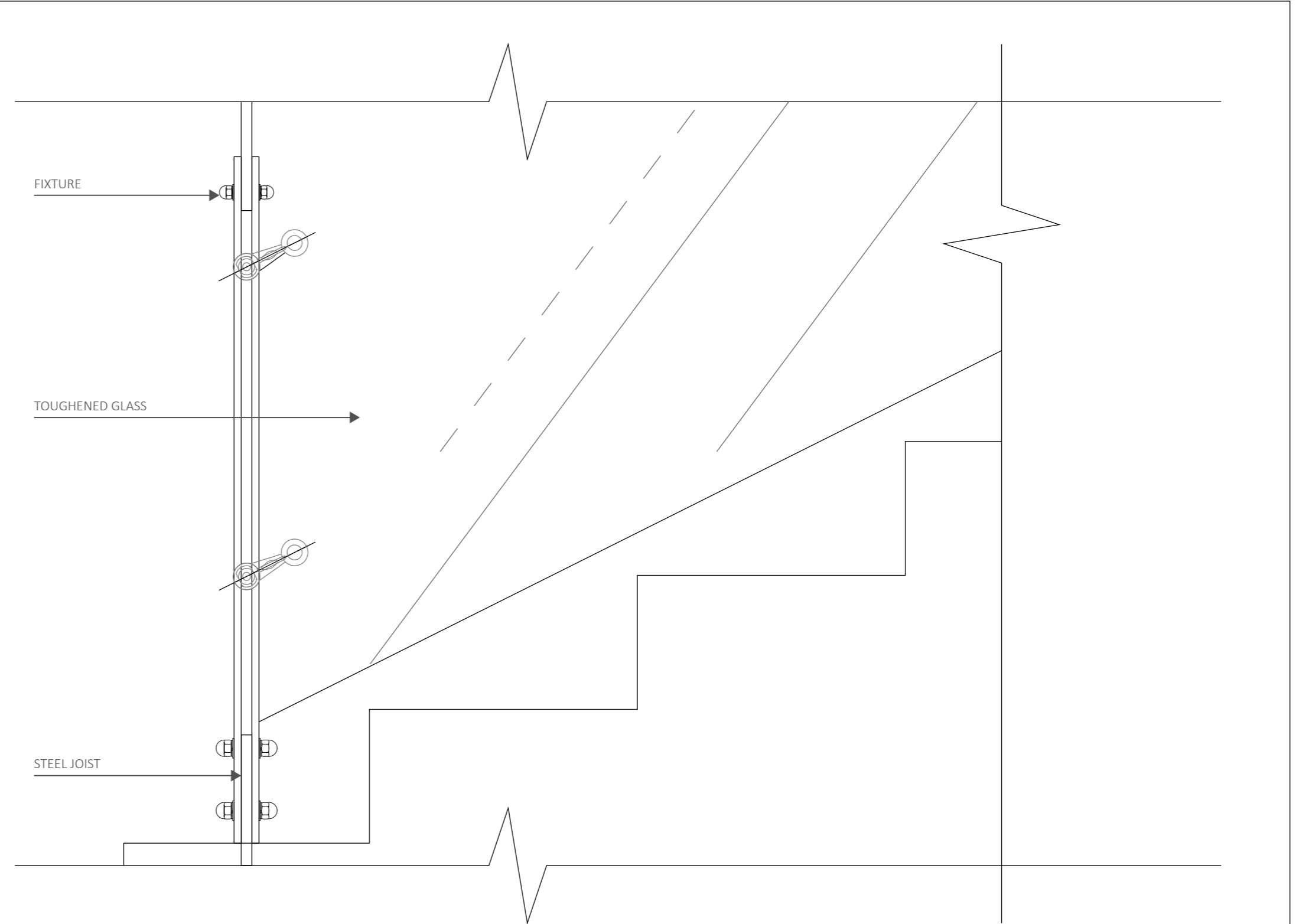
SCALE: 1:150 @A3

DATE: JULY 2022

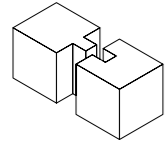
REVISION: 5



A STAIRCASE HANDRAIL DETAIL
A-D-1 SCALE: 1:1 @A3



A STAIRCASE DETAIL
A-D-2 SCALE: 1:5 @A3



allenfairview (2018). *10 Tips for Creating a Productive Workplace That Employees Will Love* | Allen - Fairview Chamber of Commerce. [online] Allen - Fairview Chamber of Commerce | Allen - Fairview Chamber of Commerce. Available at: <https://www.allenfairview-chamber.com/blog/10-tips-for-creating-a-productive-workplace-that-employees-will-love>.

Charlotte (2021). *Charlotte* (u/queen_char1993) - Reddit. [online] Reddit. Available at: https://www.reddit.com/user/queen_char1993/ [Accessed 26 Jun. 2022].

Gifford, J. (2018). *Secret of the Most Productive People - Breaking* | DeskTime Blog. [online] Deskttime. Available at: <https://deskttime.com/blog/17-52-ratio-most-productive-people/>.

Hughes, H. (2019). *Capability Integrating wellbeing, Education and Design. School Spaces for Student Wellbeing and Learning*.

Hughes, H., Franz, J. and Willis, J. (2019). *School Spaces for Student Wellbeing and Learning : Insights from Research and Practice*. Singapore Springer.

Malhan, A. (2019). *Benefits of a Positive Work Environment*. [online] Entrepreneur. Available at: <https://www.entrepreneur.com/article/331549>.

NowyStyl (n.d.). *Workplace Research & Consulting*. [online] nowystyl.com. Available at: <https://nowystyl.com/en/competences/workplace-research-consulting/> [Accessed 26 Jun. 2022].

Seppälä, E. and Cameron, K. (2015). *Proof That Positive Work Cultures Are More Productive*. [online] Harvard Business Review. Available at: <https://hbr.org/2015/12/proof-that-positive-work-cultures-are-more-productive>.

Yang, Q. and Springer-Verlag Gmbh (2016). *Space Modernization and Social Interaction a Comparative Study of Living Space in Beijing*. Berlin Springer Berlin Foreign Language Teaching and Research Publishing Co., Ltd Springer.